

# 2018 Nevada County Health Rankings and Roadmaps

John Packham, PhD

Associate Dean and Director of Health Policy Research

Office of Statewide Initiatives

University of Nevada, Reno School of Medicine

March 14, 2018

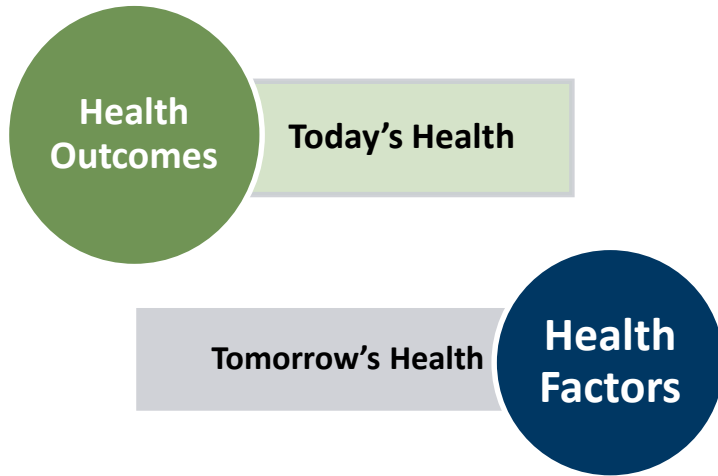
# Project Partners and Sponsors

- Robert Wood Johnson Foundation
- University of Wisconsin Population Health Institute
- Nevada Public Health Institute
- Nevada Public Health Association
- Nevada Public Health Foundation
- Carson City Health and Human Services
- Southern Nevada Health District
- Washoe County Health District
- Nevada Division of Public and Behavioral Health
- Nevada Public Health Training Center, UNR School of Community Health Sciences

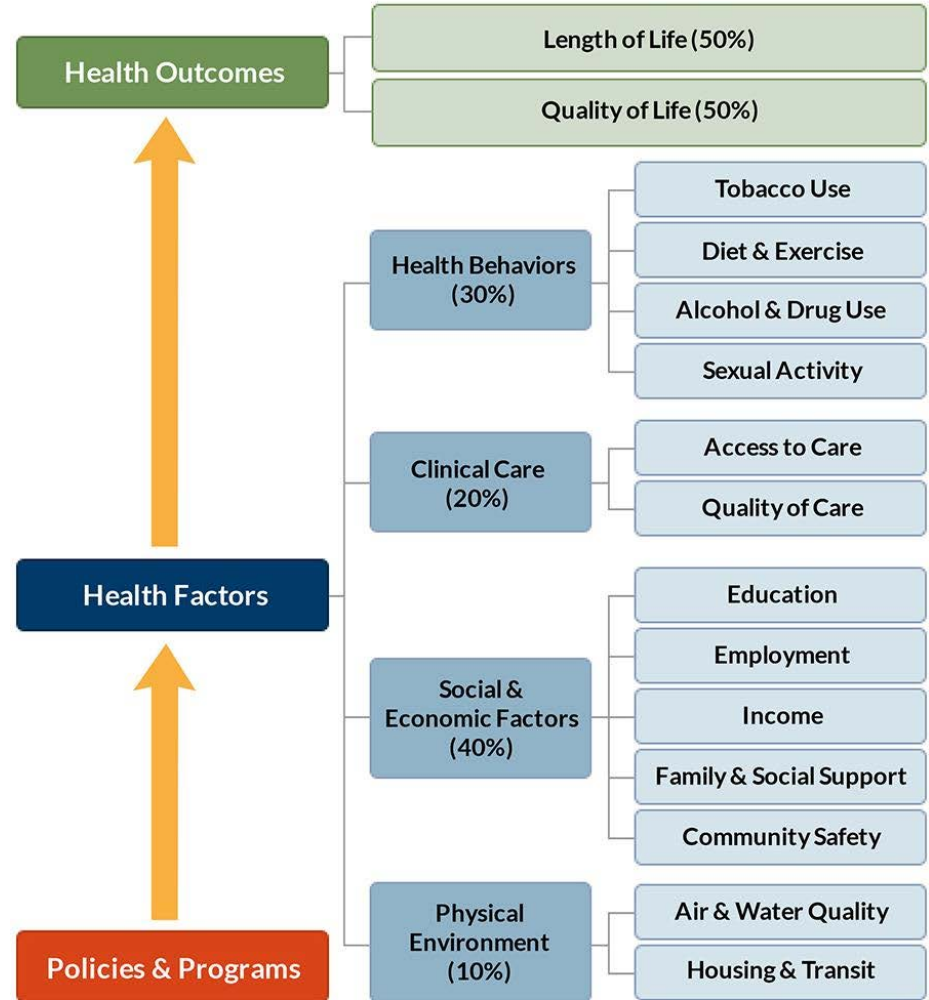
# Today's Meeting

- 2018 Nevada County Health Rankings and data
- Community health improvement efforts in northern Nevada
- Utilization of data for public health advocacy and action
- Lawmaker's perspectives on community health improvement
- Networking lunch

# Two Sets of Rankings



- Where we live matters to our health outcomes
- Many factors influence health beyond clinical care and access to care



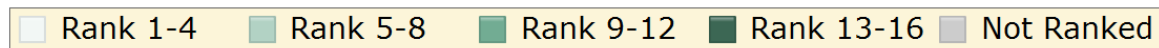
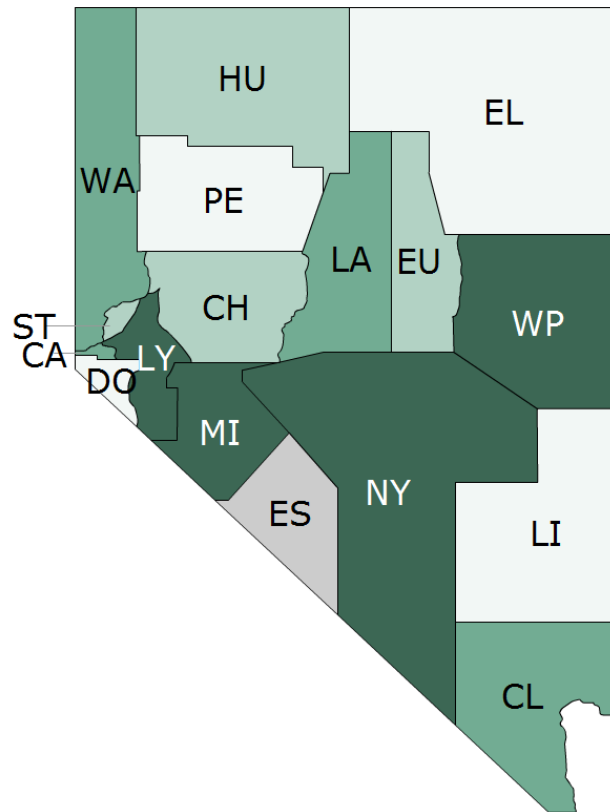
County Health Rankings model © 2014 UWPHI

# 2018 Nevada Rankings Health Outcomes

- |                   |                     |
|-------------------|---------------------|
| 1. Pershing (+1)* | 10. Clark (-4)      |
| 2. Douglas (+1)   | 11. Lander (-2)     |
| 3. Lincoln (-2)   | 12. Carson City (0) |
| 4. Elko (+1)      | 13. Lyon (+1)       |
| 5. Storey (+6)    | 14. White Pine (-1) |
| 6. Humboldt (+2)  | 15. Mineral (+2)    |
| 7. Eureka (0)     | 16. Nye (0)         |
| 8. Churchill (+2) | NR Esmeralda        |
| 9. Washoe (-5)    |                     |

\*Change versus 2017

# 2018 Nevada Rankings Health Outcomes

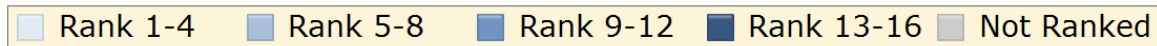
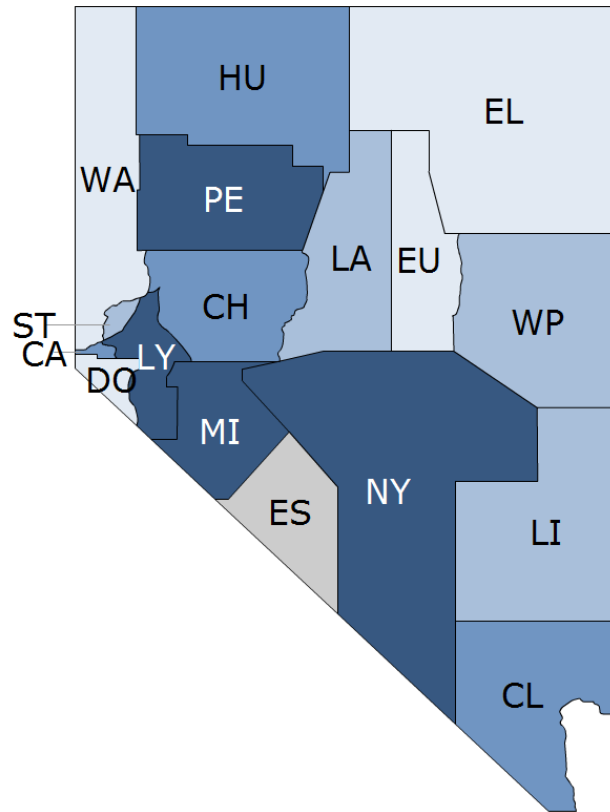


# 2018 Nevada Rankings Health Factors

- |                    |                     |
|--------------------|---------------------|
| 1. Douglas (0)*    | 10. Carson City (0) |
| 2. Eureka (0)      | 11. Churchill (0)   |
| 3. Washoe (0)      | 12. Clark (0)       |
| 4. Elko (+3)       | 13. Pershing (+1)   |
| 5. Lincoln (+4)    | 14. Lyon (+1)       |
| 6. Storey (-1)     | 15. Nye (+)         |
| 7. Lander (-3)     | 16. Mineral (+1)    |
| 8. White Pine (-2) | NR Esmeralda        |
| 9. Humboldt (-1)   |                     |

\*Change versus 2017

# 2018 Nevada Rankings Health Factors





# 2018 Sub-Rankings – Northern Nevada Counties

Measure	Carson City	Churchill	Douglas	Elko	Lyon	Pershing	Storey	Washoe
<b>Health Outcomes</b>	<b>12</b>	<b>8</b>	<b>2</b>	<b>4</b>	<b>13</b>	<b>1</b>	<b>5</b>	<b>9</b>
Length of Life	13	7	2	6	12	1	9	5
Quality of Life	9	8	5	6	13	10	2	11
<b>Health Factors</b>	<b>10</b>	<b>11</b>	<b>1</b>	<b>4</b>	<b>14</b>	<b>13</b>	<b>6</b>	<b>3</b>
Health Behaviors	7	8	1	11	16	12	4	2
Clinical Care	3	11	2	14	9	12	5	1
Social & Economic	12	10	2	1	14	13	7	5
Physical Environment	10	14	9	5	11	6	13	15

# [www.CountyHealthRankings.org](http://www.CountyHealthRankings.org)

The screenshot shows the homepage of the County Health Rankings & Roadmaps website. At the top, there is a dark blue header with the site's name and logo, and a navigation bar with orange and white sections containing menu items like 'HEALTH RANKINGS', 'ROADMAPS TO HEALTH', 'RESOURCES', and 'MORE'. Below the navigation is a large blue banner with the text 'HOW HEALTHY IS YOUR COMMUNITY?' and a map of the United States. A white box on the map says 'Choose a state or search below to begin'. To the right of the map is a vertical list of state abbreviations: NH, RI, NJ, MD, VT, MA, CT, DE, DC. Below the map are two search options: 'Find your community' with a search box and a 'SEARCH' button, and 'See what affects health' with two dropdown menus and a 'GO' button. On the right side of the page, there are two promotional cards. The top one is titled 'HOW CAN ROADMAPS TO HEALTH HELP YOU?' and features a photo of children with their arms raised, with a call to action 'GET STEP-BY-STEP GUIDANCE FROM THE ACTION CENTER'. The bottom one is titled 'RWJF CULTURE OF HEALTH PRIZE' and features a city street scene with a call to action 'LEARN MORE'.

County Health Rankings & Roadmaps  
Building a Culture of Health, County by County

A Robert Wood Johnson Foundation program

HEALTH RANKINGS ▾ ROADMAPS TO HEALTH ▾ RESOURCES ▾ MORE ▾

HOW HEALTHY IS YOUR COMMUNITY?

Choose a state or search below to begin

NH VT  
RI MA  
NJ CT  
MD DE  
DC

Find your community  
Search by county or state  
SEARCH

OR

See what affects health  
Select a Measure ▾  
Select your State ▾  
GO

HOW CAN ROADMAPS TO HEALTH HELP YOU?  
GET STEP-BY-STEP GUIDANCE FROM THE ACTION CENTER

RWJF CULTURE OF HEALTH PRIZE  
LEARN MORE