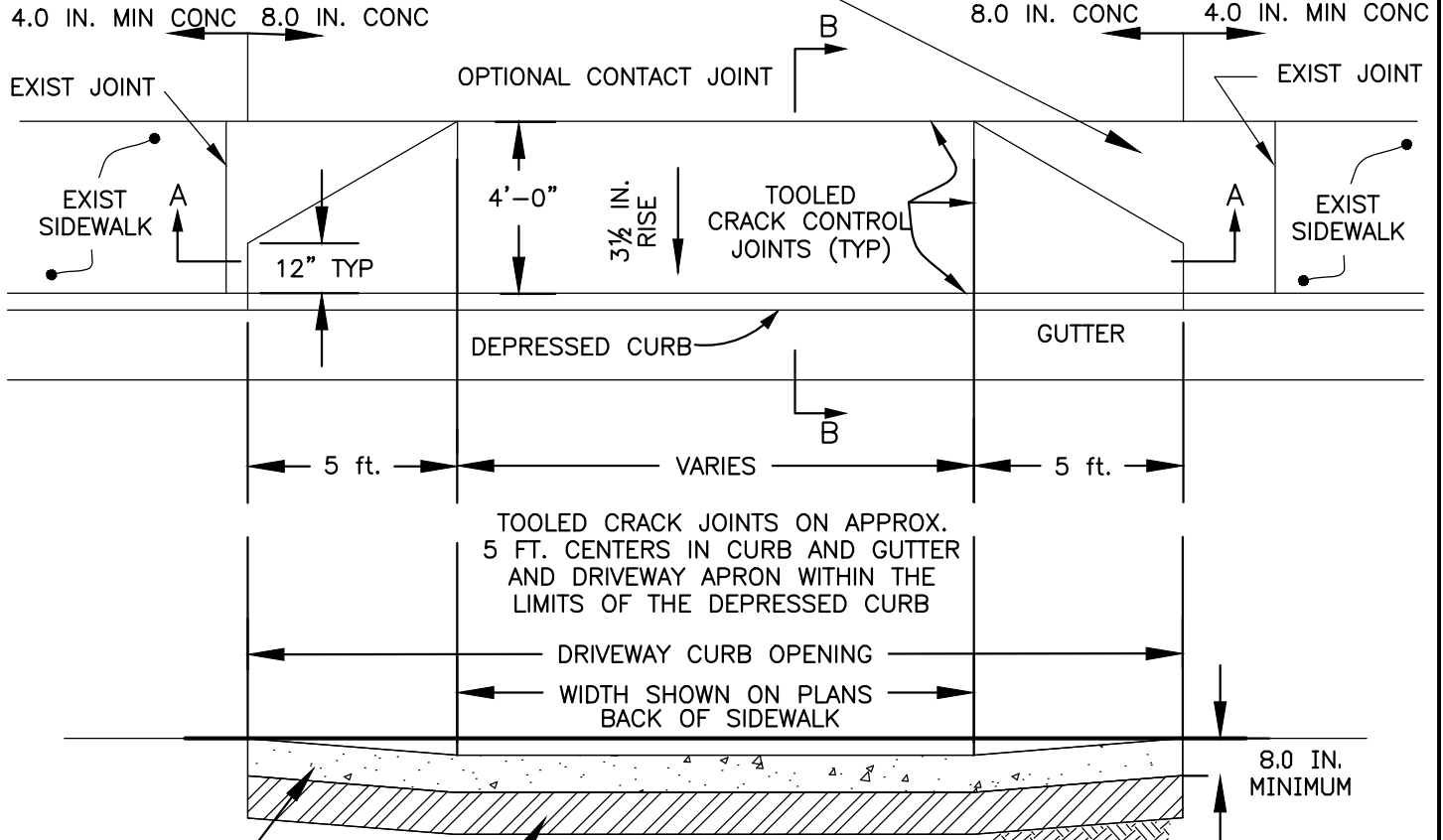


PLAN

FOR INSTALLATIONS WHERE EXISTING SIDEWALK IS ADJACENT TO CURB, EXISTING CONCRETE SIDEWALK SHALL BE REMOVED TO NEAREST PANEL JOINT AND REPLACED WITH NEW CONC. AT THICKNESSES SHOWN



SECTION A-A  
N.T.S.

8 IN MIN THK. CONCRETE

4 IN MIN OF TYPE 2, CLASS B AGGREGATE BASE (SEE NOTE 10)

SUBGRADE (SEE NOTE 11)

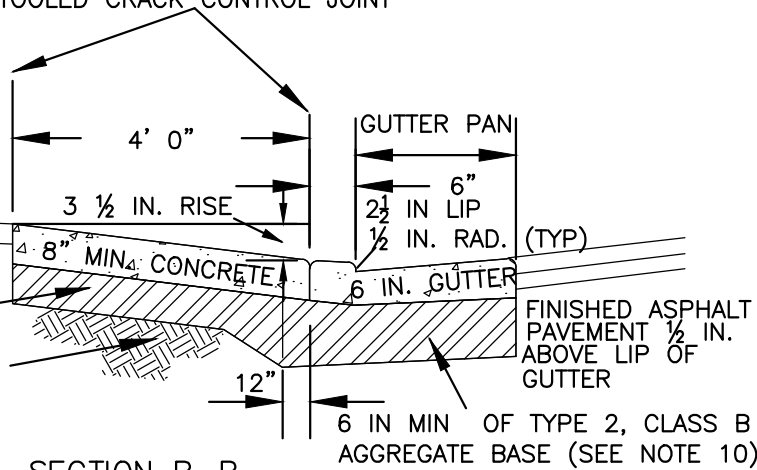
TOOLED CRACK CONTROL JOINT

8 IN MIN THK. CONCRETE IN WINGS, AND TAPERS

PRIVATE DRIVEWAY

4 IN MIN OF TYPE 2, CLASS B AGGREGATE BASE (SEE NOTE 10)

SUBGRADE (SEE NOTE 11)



SECTION B-B  
N.T.S.

**SEE PAGE 4 OF 4 (13.4) FOR NOTES**

| NO. |  |  | REVISED |  |  | DATE      |  |  | STANDARD DETAILS FOR PUBLIC WORKS CONSTRUCTION                                  |  |  | SECTION:                     |  |
|-----|--|--|---------|--|--|-----------|--|--|---|--|--|------------------------------|--|
| 1   |  |  | REDRAW  |  |  | 03/10 sw  |  |  | <b>P.C.C. DRIVEWAY APRON<br/>(W/ EXISTING ADJACENT SIDEWALK)</b><br>Page 3 of 4 |  |  | WASHOE                       |  |
| 2   |  |  | REVISED |  |  | 09/15 mde |  |  |   |  |  | DRAWING NO:                  |  |
| 3   |  |  | REVISED |  |  | 08/16 ww  |  |  |   |  |  | W-5.11                       |  |
| 4   |  |  |         |  |  |           |  |  |   |  |  | DATE: 08/16 ww    PAGE: 13.3 |  |