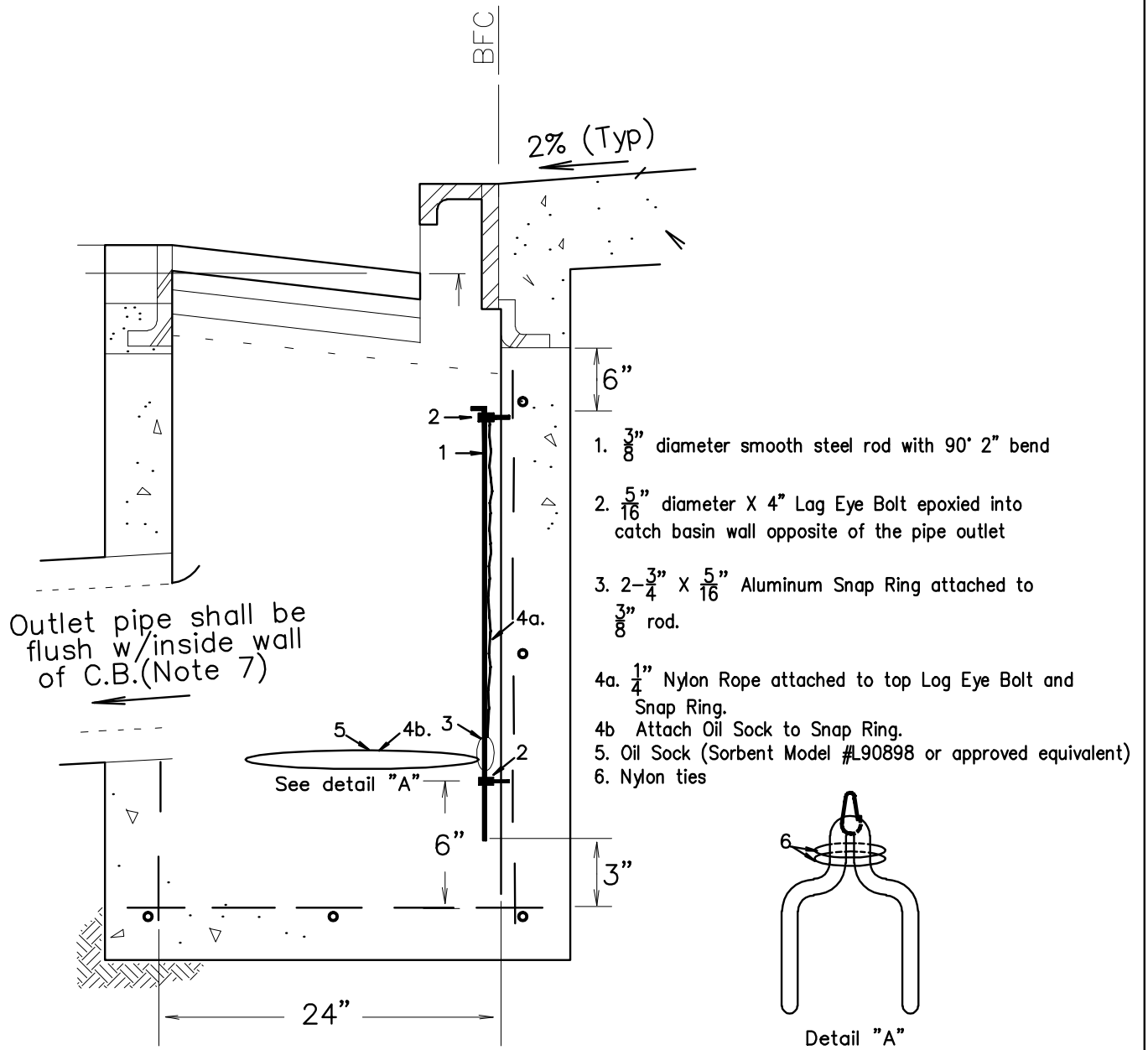
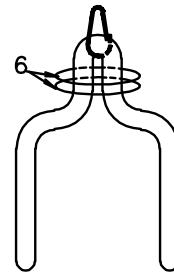


# DETAIL



1.  $\frac{3}{8}$ " diameter smooth steel rod with 90° 2" bend
2.  $\frac{5}{16}$ " diameter X 4" Lag Eye Bolt epoxied into catch basin wall opposite of the pipe outlet
3. 2- $\frac{3}{4}$ " X  $\frac{5}{16}$ " Aluminum Snap Ring attached to  $\frac{3}{8}$ " rod.
- 4a.  $\frac{1}{4}$ " Nylon Rope attached to top Log Eye Bolt and Snap Ring.
- 4b Attach Oil Sock to Snap Ring.
5. Oil Sock (Sorbent Model #L90898 or approved equivalent)
6. Nylon ties

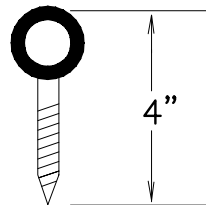


Detail "A"

$\frac{5}{16}$ " Aluminum Snap Ring detail



$\frac{5}{16}$ " Stainless Lag Eye Bolt Detail



NO.	REVISED	DATE	STANDARD DETAILS FOR PUBLIC WORKS CONSTRUCTION	SECTION:	
			<h2>CATCH BASIN TYPE 4-R</h2>	WASHOE	
				DRAWING NO:	W-12.1
				DATE:	PAGE: 25.1

03/10sw