

MATERIAL SPECIFICATIONS

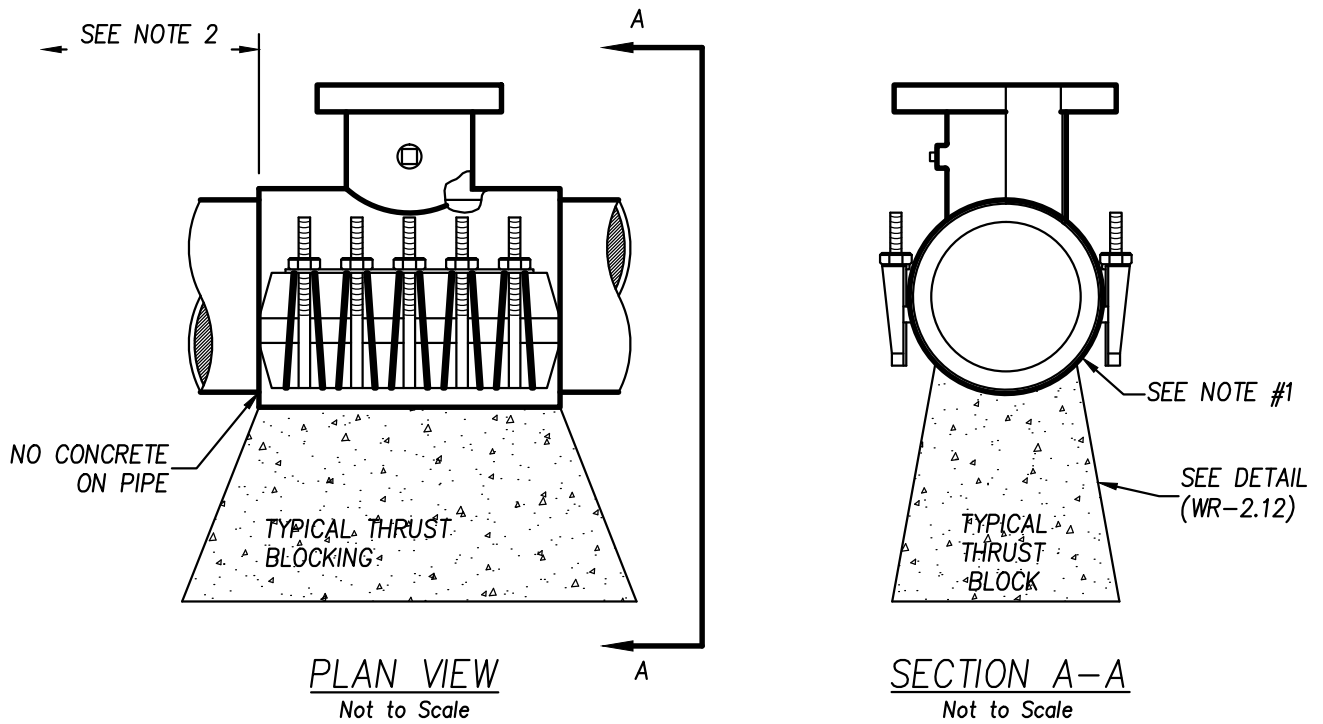
SHELL: 304 STAINLESS STEEL

LUGS: 304 STAINLESS STEEL

BOLTS, WASHERS, AND NUTS: NC ROLLED THREAD
304 STAINLESS STEEL, 5/8" DIAMETER

GASKETS: VIRGIN SBR COMPOUNDED FOR WATER SERVICE. ASTM D2000-80MA 4AA607
FULL GASKET. 360° PIPE COVERAGE 150 P.S.I. WORKING PRESSURE

FLANGE: 304 STAINLESS STEEL OR HIGH TENSILE DUCTILE (NODULAR) IRON, ASTM A536-80, GRADE 65-45-12



NOTES:

1. MATERIAL USED FOR THRUST BLOCKING SHOULD NOT PREVENT ACCESS TO THE BOLT ASSEMBLY.
2. MINIMUM DISTANCE BETWEEN SADDLE, COLLARS, JOINTS, SERVICES, TAPS, ETC. WILL BE 18" CLEAR.
3. SADDLE TO BE HYDROSTATICALLY PRESSURE TESTED TO CLASS RATING OF THE PIPE PRIOR TO TAP.
4. ALL FITTINGS TO BE POLY WRAPPED PRIOR TO CONCRETE PLACEMENT.

NO.	REVISED	DATE	STANDARD DETAILS FOR PUBLIC WORKS CONSTRUCTION	SECTION:	WASHOE
			DISTRIBUTION TAP	DRAWING NO:	WR-2.13
				DATE: 7/09	PAGE: 26