

3/4" BRASS CONNECTION MIP x
BARB HOSE FITTING

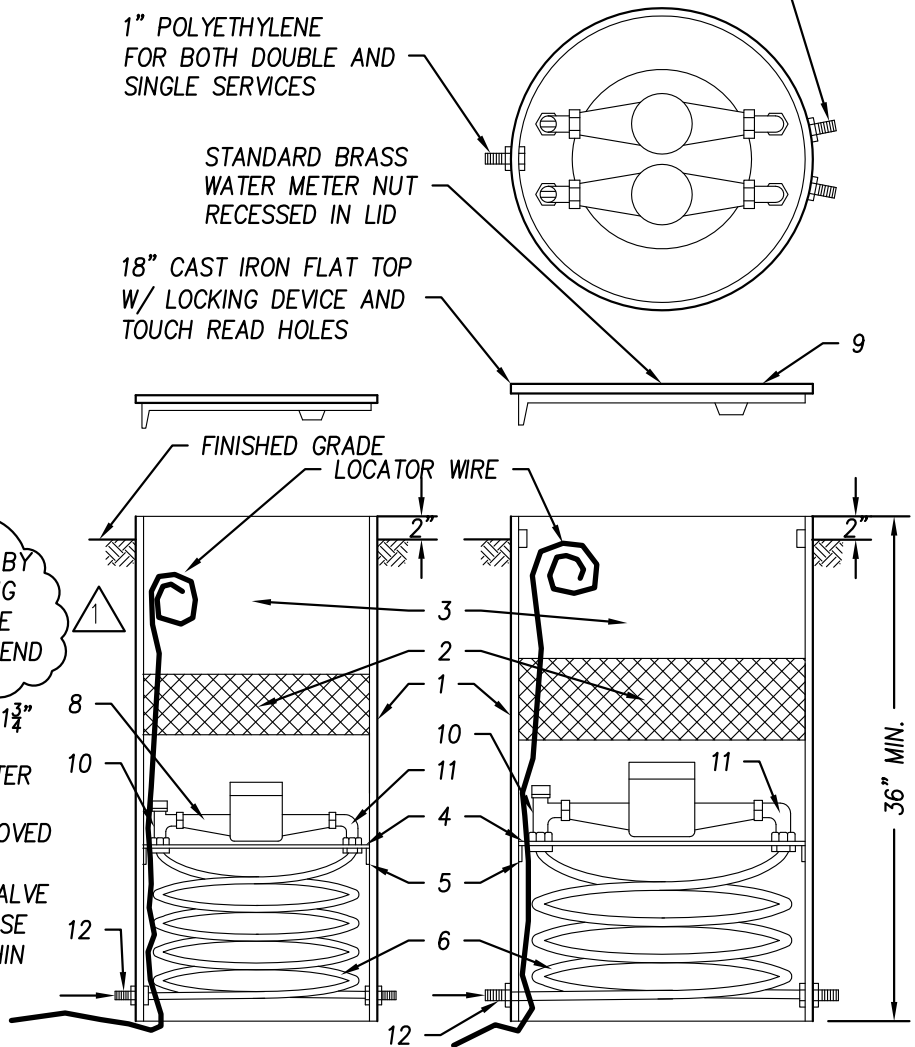
1" POLYETHYLENE
FOR BOTH DOUBLE AND
SINGLE SERVICES

STANDARD BRASS
WATER METER NUT
RECESSED IN LID

18" CAST IRON FLAT TOP
W/ LOCKING DEVICE AND
TOUCH READ HOLES

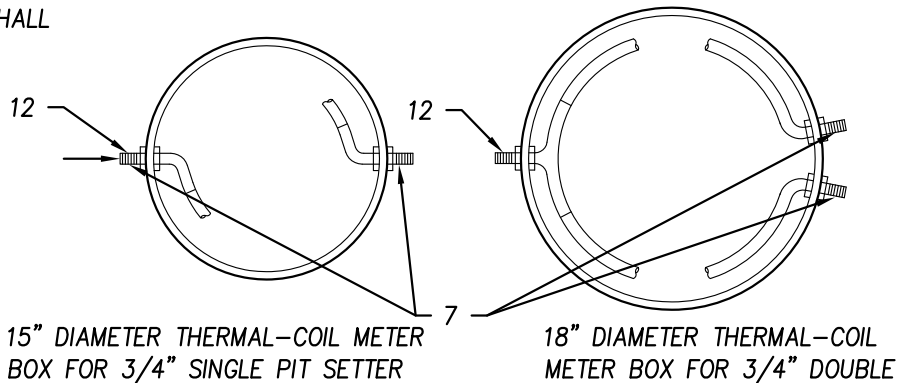
LEGEND

1. PVC BOX MIN. WALL THICKNESS 0.3"
2. INSULATION
3. AIR SPACE
4. PLATFORM
5. PLATFORM SUPPORT
6. POLYBUTYLENE PIPE
7. L.P.S. THREADS
8. WATER METER—APPROVED BY DWR WITH REMOTE READING DEVICE, SENSUS iPERL (ICE REGISTERS WITH FLEXNET END POINT TRANSMITTERS).
9. CAST IRON FLAT TOP W/ 1 3/4" TRANSPONDER OPENING. EPOXY COAT RECLAIM METER LIDS PURPLE
10. MUELLER VALVE OR APPROVED EQUAL (NO. 14265)
11. MUELLER ANGLE CHECK VALVE
12. INLET LINE TO BE 1". HOSE TERMINUS TO REMAIN WITHIN 15° OF HORIZONTAL



GENERAL NOTES

1. SERVICE LINE—SIZE AS SHOWN WITH COUPLING ADAPTOR
2. PIT SETTER EXTENSION SHALL ONLY BE USED UPON APPROVAL BY DWR.



NO.			REVISID			DATE			STANDARD DETAILS FOR PUBLIC WORKS CONSTRUCTION			SECTION:	
1			ARJ			1/14			3/4" METER VAULT			WASHOE	
												DRAWING NO: WR-2.11.1	
												DATE: 7/09	PAGE: 21