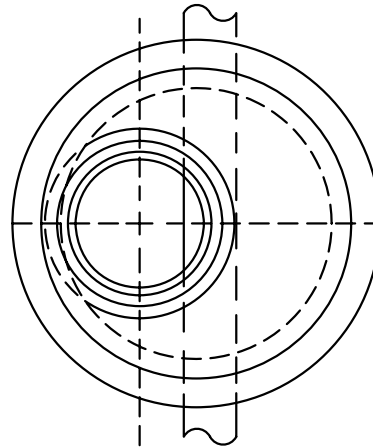
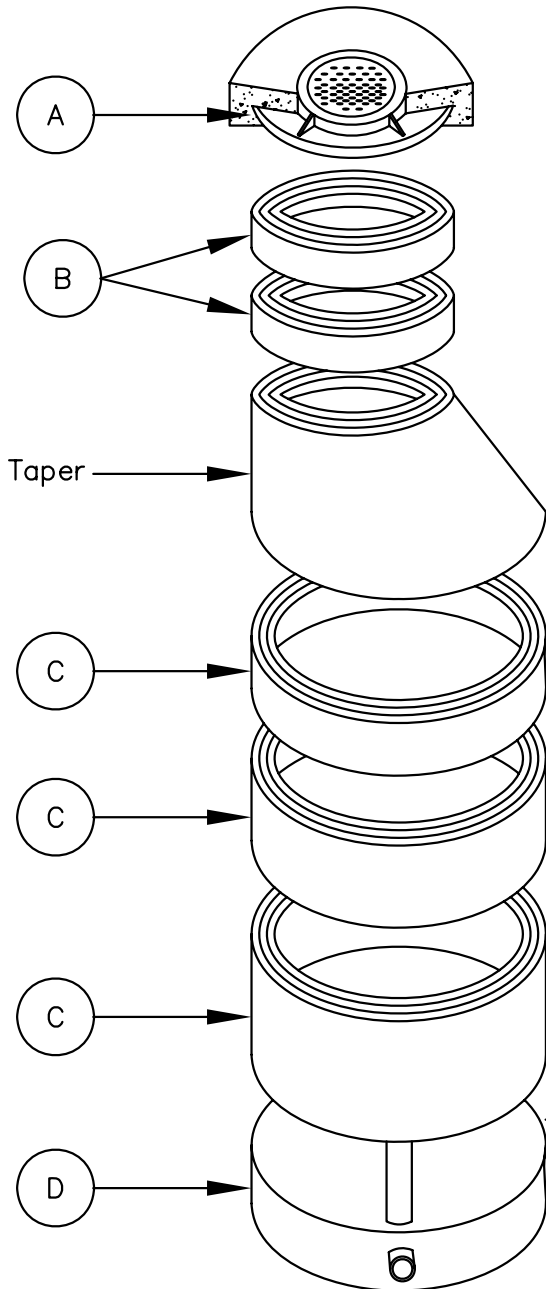
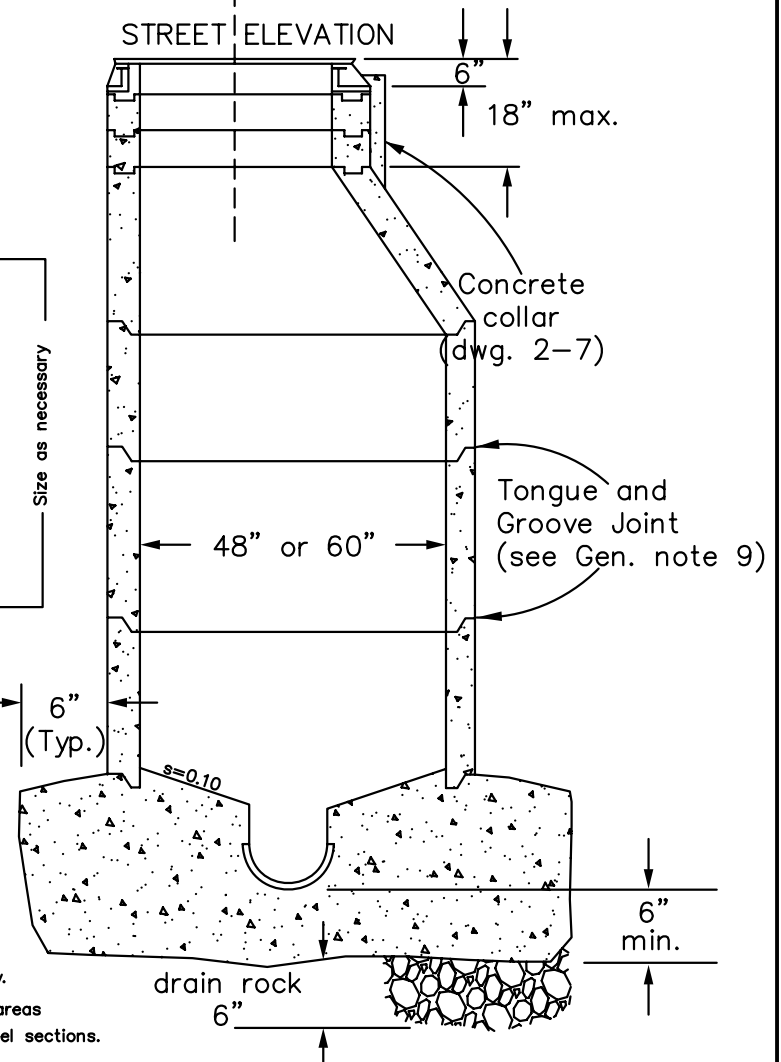


Typical Precast Concrete Manhole with eccentric taper.
EXPLODED VIEW

Precast Manhole Components shall conform to ASTM C-478



SYM.	ITEM
A	Ring & Cover
B	Grade Adjusting Ring
C	Precast Manhole Sect.
D	Base



NOTES

1. Manhole section, lengths arranged to fit depth.
2. Precast base may be used if approved by Governing Agency.
3. Lander County Only - Manholes constructed in non-paved areas shall have minimum wall thickness of 5" on cone and barrel sections.

NO.	REVISED	DATE	STANDARD DETAILS FOR PUBLIC WORKS CONSTRUCTION	SECTION:
1			MANHOLE TYPE IA	2
2				DRAWING NO: 2-3.2
3				DATE: 8-07 PAGE: 5