

# Washoe County Traffic Calming & Traffic Engineering Request Policy

9/3/2019



## **Acknowledgements**

### **Washoe County Commission**

Vaughn Hartung  
Bob Lucey  
Marsha Berkgigler  
Kitty Jung  
Jeanne Herman

### **Washoe County Manager**

Dave Solaro – Interim County Manager

### **Assistant County Managers**

Kate Thomas  
Christine Vuletich

### **Engineering Division**

Dwayne Smith, PE – Division Director of Engineering and Capital Projects  
Mitchell Fink, EI Engineering Division

Prepared By:



Headway Transportation, LLC  
5482 Longley Lane, Suite B  
Reno, NV 89511  
Tel: 775-322-4300

---

## INTRODUCTION

The goal of this policy is to provide Washoe County residents with a straightforward process for requesting traffic calming or traffic engineering/operational measures related to speeding, pedestrian and driver safety and traffic volumes. This policy categorizes requests into two different types: Traffic Calming Requests & Traffic Engineering/Operational Requests because these two types of requests address different issues and require the application of different engineering standards, guidelines, and analysis methodologies. Requests regarding speeding and the safety of pedestrian, cyclists, and motorists are categorized as Traffic Calming Requests. Traffic Engineering/Operational Requests are comprised of any request for traffic control devices or traffic engineering interventions outside the scope of the Traffic Calming Request process, including requests for Stop Signs. The policy is not intended to address maintenance issues.

### ***Traffic Calming Requests***

The process for addressing Traffic Calming requests involves analyzing the feasibility of using traffic calming techniques including physical and non-physical measures to influence and reduce unwanted driver behaviors. Traffic calming techniques must also: improve the safety of the street for all roadway users, including pedestrians and cyclists; must not unduly hamper access by emergency services, such as police, fire, and rescue; must not inhibit road maintenance operations such as snow plowing; must not be an impediment to traffic, and are best achieved through community support and involvement. Traffic Calming devices can help address the following issues: Speeding, Safety, and Traffic Volumes. Potential traffic calming devices and non-physical interventions are listed below and include devices to control speed and volume, leading to increased safety. Requests for any type of device or intervention not specifically listed below will be treated as a Traffic Engineering/ Operational Request. More information about each Traffic Calming measure is available through the Federal Highway Administration "Traffic Calming ePrimer", hyperlink include on page 9.

Traffic Calming Devices/Interventions:

- ▣ Non-Physical Measures
  - » Speed Enforcement
  - » Radar Speed Signs
  - » Speed Legend
  - » Raised Pavement Markers
  - » Angled Parking
  
- ▣ Volume Control Measures
  - » Full Closure
  - » Half Closure
  - » Diagonal Diverter

- Median Barrier
- Forced Turn Island
  
- Vertical Speed Control Measures
  - Speed Hump<sup>1</sup>
  - Speed Table
  - Raised Crosswalk
  - Raised Intersection
  
- Horizontal Speed Control Measures
  - Traffic Circle
  - Chicane
  - Lateral Shift
  
- Narrowing Measures
  - Neckdown
  - Choker
  - Center Island

### ***Traffic Engineering/Operational Requests***

Traffic Engineering/Operational Requests are comprised of any request for traffic control devices or traffic engineering interventions outside the scope of the Traffic Calming Request process, including requests for Stop Signs, Traffic Signals, Rectangular Rapid Flashing Beacons (RRFB), roundabouts, new crosswalks (not including raised crosswalks), guardrails, and all other traffic control devices. Traffic Engineering/Operational Requests are categorized into two types based on the subject roadway classifications. The two request types are: Arterial Projects and Collector/Local Projects, explained in **Step 2** of the Request Process. The analysis performed under this process will follow applicable national standards and best practices adopted by Washoe County which may include the following:

- Stop Sign Warrant Analysis
- Traffic Signal Warrant Analysis
- Rectangular Rapid Flashing Beacon Warrant Analysis
- Crosswalk Warrant Analysis
- Intersection Operational Analysis
- Posted Speed Limit Analysis

---

<sup>1</sup> This policy supersedes the Washoe County Speed Hump Policy

## REQUEST PROCESS

All Traffic Calming and Traffic Engineering/Operational Requests will be processed using the method illustrated in **Figure 1** and detailed in the following Steps. Minimum roadway criteria and petition requirements vary based on the type of request and the subject roadway classification. The Washoe County Engineering staff will assist the petitioners in identifying the different requirements for each request type before starting a formal petition. At the sole discretion of the Washoe County Engineer the petition requirement may be waived, based on the request circumstances, allowing the request to proceed directly to the Engineering Study (**Step 3**).

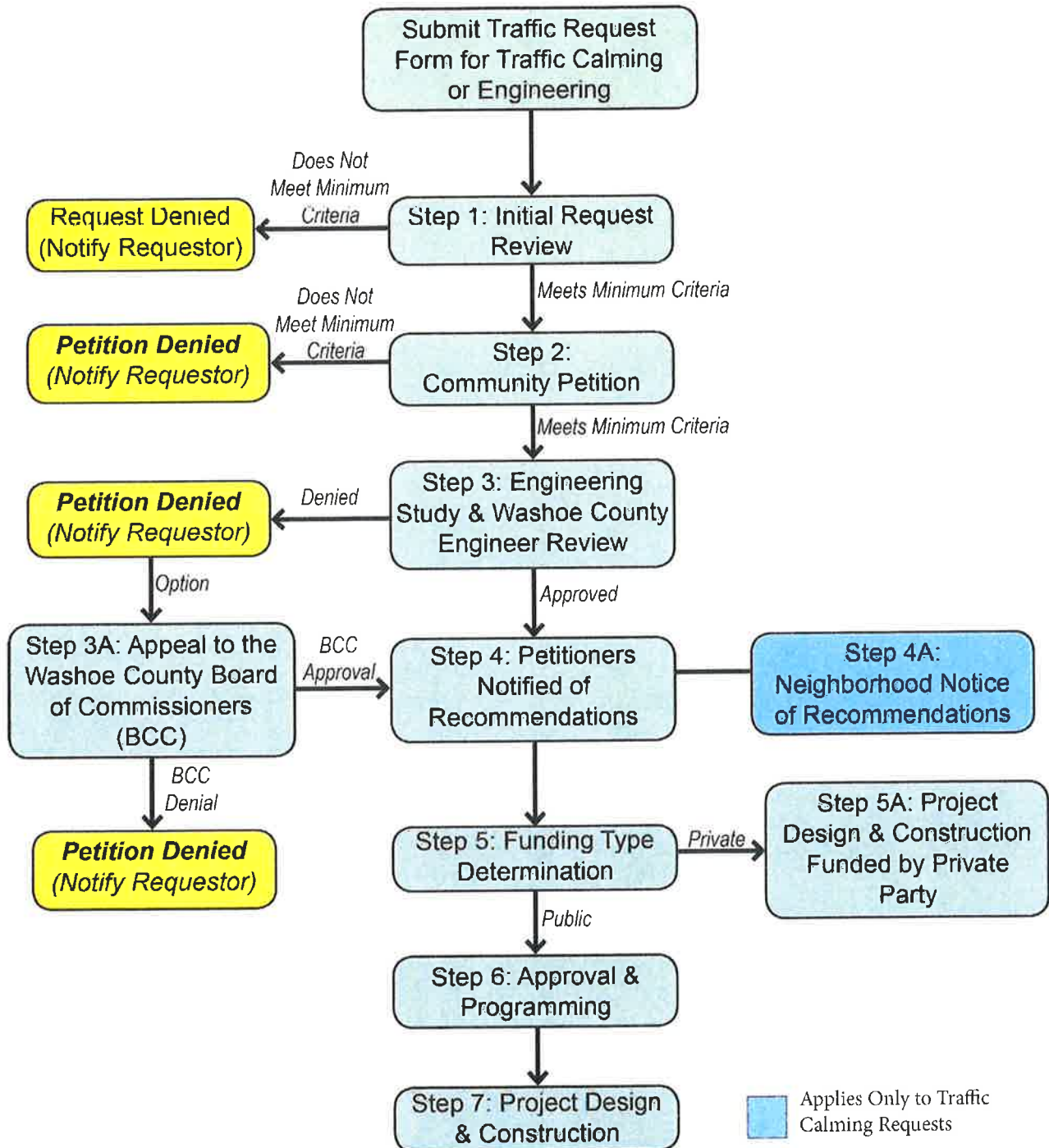


Figure 1. Traffic Calming & Traffic Engineering/Operational Request Process Flowchart

### **Step 1: Initial Request Review**

A Traffic Calming/Traffic Engineering Request Form (**Appendix A**) must be completed and submitted to the Washoe County Engineering Division staff (Engineering). Submitted Traffic Calming/Traffic Engineering Request Forms will be reviewed by Engineering to identify the applicable request type and whether the roadway in question satisfies the minimum criteria detailed below.

Traffic Calming Requests minimum criteria for study roadways:

- ▶ Roadway classification of Collector or Local (based on the current RTC Regional Transportation Plan – Roadway Classification, available in **Appendix B**). If a roadway or roadway segment is not listed in the table provided in **Appendix B**, and is not an interstate, the roadway is classified as a Local roadway.
- ▶ Posted speed limit of 30 miles per hour or less
- ▶ Two-thirds of the street frontage in the area of concern must be residential, park, and/or school frontage

Traffic Engineering/Operational Requests minimum criteria for study roadways:

- ▶ Roadways evaluated under this process must be classified as Local, Collector, or Arterial (based on the current RTC Regional Transportation Plan – Roadway Classification, available in **Appendix B**). Freeways and state highway facilities are not eligible for analysis through this process. If a roadway or roadway segment is not listed in the table provided in **Appendix B**, and is not an interstate, the roadway is classified as a Local roadway. The roadway classification is used to determine the type of petition required. All study roadways included in a Collector/Local Street Petition must be classified as Collectors or Local roadways. For example, if a petition includes three Collectors and one Arterial, an Arterial Project Petition is required. Similarly, intersections on Arterials require the Arterial Project Petition.

Engineering reserves the right to deny Traffic Calming & Traffic Engineering requests based on engineering judgement and traffic engineering guidelines set forth by Washoe County Code and Policy, NRS, AASHTO, and the MUTCD; see TRAFFIC CALMING & TRAFFIC ENGINEERING RESOURCES on page 9. If the roadway(s) in question meets the minimum criteria, and satisfies engineering judgement & guidelines, Washoe County Staff will include a study area to be used for the Petition, Step 2. If the roadway(s) in question does not meet the minimum criteria, or satisfy engineering judgement & guidelines, Washoe County staff will notify the Requestor.

### **Step 2: Community Petition**

Based on the specific roadways included in the request and the criteria identified in **Step 1**, Engineering will direct the Requestor to the applicable petition template that should be completed in full by following the instructions at the top of the petition template. Petition templates are available in **Appendix C**, and must identify the problem statement, preliminary study roadways, initial request, and a primary contact

person. All submitted petitions will be reviewed by Engineering for completeness and verification. If the submitted petition is incomplete or does not satisfy the minimum requirements detailed in this section, the petition will be denied, and the primary contact person will be notified. Petitioners must provide accurate contact information in order to verify the completeness of the petition and to receive updates at major milestones in the process.

#### Traffic Calming Petition

A Traffic Calming Petition must be signed by a minimum of 20% of property owners along the study area.

#### Traffic Engineering – Collector/Local Project Petition

All petitions relating to roadways classified as Collectors or Local roadways must be signed by a minimum of 20% of property owners along the study area.

#### Traffic Engineering – Arterial Project Petition

All petitions involving roadways classified as arterials must be signed by a minimum of 40% of property owners along the study area

### ***Step 3: Engineering Study & Washoe County Engineer Review***

#### Engineering Study

Following the successful completion of a community petition, Washoe County will conduct an engineering study to review the roadway(s)/intersection(s) identified in the petition. The scope of study and type of analysis conducted will be determined by the Washoe County Engineer based on the problem identified in the Community Petition and engineering judgement. All engineering studies will adhere to traffic engineering guidelines set forth by Washoe County Code and Policy, NRS, AASHTO, and the MUTCD; see TRAFFIC CALMING & TRAFFIC ENGINEERING RESOURCES on page 9.

A typical study will collect data along the study roadway, including but not limited to, Average Annual Daily Traffic (AADT) volume, posted speeds, vehicular speed data, crash history from the previous three years, and adjacent land uses. This data will be analyzed following adopted engineering practices to evaluate the issue identified in the Community Petition and any other issues which come to light during the analysis. All Engineering studies will include recommended strategies to address the identified issue(s), and a preliminary cost estimate for implementing the best solution(s).

Following a Traffic Calming analysis, the roadway will be given a point ranking based on the criteria outlined in **Appendix D**. The point ranking will be used to gauge the level of need for engineering interventions and will help guide prioritization and funding decisions.

Funding sources available for public works projects are limited and it is important to understand that funding is allocated to projects with the highest need and potential community benefit. Traffic Calming



projects with an initial point ranking below 20 will be automatically denied as they are unlikely to receive public funding with such a low ranking. In this case, private funding is the sole remaining funding option.

Point rankings for Traffic Calming Projects will be based on the following metrics:

- ▶ Posted Speed vs. 85<sup>th</sup> Percentile Speed
- ▶ AADT
- ▶ Recent Crash History
- ▶ Proximity of K-12 Schools and parks

A complete scoring rubric for Traffic Calming projects is included in **Appendix D**.

Due to the wide variety of potential requests which fall under the Traffic Engineering/Operational request type, no single rubric for ranking approved projects will be utilized. Instead, approved projects will be prioritized based on the following metrics in addition to engineering judgement:

- ▶ Recent Crash History
- ▶ Cost
- ▶ Traffic Volumes
- ▶ Impact to local transportation network
- ▶ Other metrics as needed based on the analysis and issue identified

#### Washoe County Engineer Approval

The Washoe County Engineer will review the completed engineering study to assess the magnitude of the issue identified, the potential benefits of the recommendations (if any), compatibility with the local transportation network and long-range plans, preliminary cost estimates, and the initial point ranking. The Washoe County Engineer will either approve or deny the recommended improvements included in the engineering study. The Washoe County Engineer may approve one or all of the recommended projects included in a study. Approved projects will be presented to petitioners in **Step 4**. Projects which are denied by the Washoe County Engineer may be appealed to the Washoe County Board of Commissioners (the Board). The Washoe County Engineer will notify the primary contact person regarding the decision of approval or denial and the reasons for the decision.

#### ***Step 3A: Appeal to Washoe County Board of Commissioners***

In the case of a denial in **Step 3**, the petitioners may appeal directly to the Washoe County Board of Commissioners. In order to start the appeal process, the petitioners must notify the Washoe County Engineer of their decision to appeal through a signed Letter of Appeal within 30 days of the original denial notification. Once a Letter of Appeal is received by the Washoe County Engineer, the appeal will be added as an item for consideration on the meeting agenda of an upcoming Washoe County Board of Commissioners meeting. The Board may either approve or deny the recommended projects specifically presented in the Engineering Study. The Board will not change the recommendations without an

engineering study supporting the revision. Projects approved by the Board will proceed to **Step 4**. All decisions by the Board are final and not subject to appeal. The primary contact person will be notified of the Board's decision.

***Step 4: Petitioners Notified of Recommendations***

Petitioners will be notified of the outcome of their petition, including any approved recommendations, and the next steps in the process following the completion of **Step 3** (including **Step 3A**, if applicable).

***Step 4A: Neighborhood Notice of Recommendations (Traffic Calming Only)***

Once Traffic Calming projects are approved for funding, a notice will be mailed to all property owners within a ¼ mile radius of the approved Traffic Calming project in order to give advanced notice of the change to the subject roadway(s).

***Step 5: Funding Type Determination***

Approved projects may be funded by private funding sources, if desired. Public funding streams must ensure that projects with the greatest needs and potential benefits are prioritized, and therefore it is possible that approved Traffic Calming or Traffic Engineering/Operational projects with low point rankings will not be publicly funded as other projects may demonstrate a greater need and higher point ranking. Additionally, public funding varies from year to year and may result in approved projects not receiving funding for multiple years. For these reasons, projects with private funding are likely to be completed earlier than if they were funded solely through public sources.

***Step 5A: Project Design & Construction Funded by Private Party***

In order to privately fund a project, the private funding entity (or person) must enter into an agreement with Washoe County to ensure that Washoe County engineering standards and national guidelines will be adhered to during design and construction and to determine on-going maintenance obligations.

***Step 6: Approval & Programming***

Approved projects not privately funded will be prioritized into the budget of applicable funding sources based on their point ranking and funding availability. It is important to note that public funds for Public Works projects are limited and the timeline for funding an approved project is not certain. Washoe County may break approved projects into separate design and construction phases in order to allocate funding more efficiently.

***Step 7: Project Design & Construction***

Following the allocation of funds for an approved project, final designs and cost estimates will be developed for the project. Construction will follow when the necessary funding is fully in place.

## **TRAFFIC CALMING & TRAFFIC ENGINEERING RESOURCES**

The following resources include more information on common traffic calming measures:

- ‡ Federal Highway Administration & Institute of Traffic Engineers: Traffic Calming ePrimer ([https://safety.fhwa.dot.gov/speedmgt/traffic\\_calm.cfm](https://safety.fhwa.dot.gov/speedmgt/traffic_calm.cfm))

The following resources are standards related to common Traffic Engineering/Operational Requests within Washoe County:

- ‡ Washoe County Code Section 436
- ‡ Stop Sign Warrant Analysis – Manual on Uniform Traffic Control Devices (MUTCD)
- ‡ Traffic Signal Warrant Analysis – MUTCD
- ‡ Rectangular Rapid Flashing Beacon Warrant Analysis – National Cooperative Highway Research Program (NCHRP) Report 562
- ‡ Crosswalk Warrant Analysis – NCHRP Report 562
- ‡ Roadway Design Guidelines – American Association of State Highway and Transportation Officials (AASHTO): A Policy on Geometric Design of Highways & Streets

**Appendix A**  
**Traffic Calming / Traffic Engineering**  
**Request Form**



# WASHOE COUNTY

## COMMUNITY SERVICES DEPARTMENT

### Engineering & Capital Projects

#### TRAFFIC CALMING / TRAFFIC ENGINEERING REQUEST

Name: \_\_\_\_\_

Address: \_\_\_\_\_

Street for Review (From/To): \_\_\_\_\_

Day Phone No.: \_\_\_\_\_ Email Address: \_\_\_\_\_

Are you willing to be the "Point of Contact" regarding this Traffic Calming / Traffic Engineering request in your neighborhood?

Yes       No\*

\*If no, please revise information section of form with someone willing to be the point of contact.

Please check any issues that apply to your street:

- Speed of automobile traffic
- Volume of automobile traffic
- Sign Installation
- Cut-through traffic
- High pedestrian volume
- Number of accidents
- Sight Visibility
- Sidewalks, crosswalks, bike lanes, lighting, etc.

Please elaborate on the specific problems on your street or in your neighborhood:

---



---



---



---



---

Once completed, please send your completed request form to:

Washoe County - Community Services Department

**Attn: Engineering Division - Traffic**

1001 E. Ninth Street

Reno, NV 89512

Phone: 775-328-2040

Email: [Engineering@washoecounty.us](mailto:Engineering@washoecounty.us)



INTEGRITY



EFFECTIVE COMMUNICATION



QUALITY PUBLIC SERVICE

**Appendix B**  
**RTP Washoe Roadway Classification**

Table E-3 Regional Road System

Street Name	From	To	Functional Class	Policy Access
1 <sup>st</sup> St	Keystone Ave	Lake St	Arterial	LAC
2 <sup>nd</sup> St	Keystone Ave	Kuenzli St	Arterial	LAC
2 <sup>nd</sup> St	Kuenzli St	Kietzke Ln	Arterial	MAC
3 <sup>rd</sup> St (Verdi)	I-80 West	Bridge St	Arterial	MAC
4 <sup>th</sup> St	I-80 West	Galletti Way	Arterial	MAC
5 <sup>th</sup> St	Keystone Ave	Sierra St	Arterial	MAC
5 <sup>th</sup> St	Sierra St	Evans Ave	Arterial	ULAC
6 <sup>th</sup> St	Ralston St	Evans Ave	Arterial	ULAC
6 <sup>th</sup> St	Evans Ave	4 <sup>th</sup> St	Arterial	MAC
7 <sup>th</sup> Ave	Dream Catcher Dr	Chocolate Dr	Arterial	MAC
7 <sup>th</sup> Ave	Chocolate Dr	Sun Valley Dr	Arterial	LAC
7 <sup>th</sup> St	Robb Dr	Vine St	Arterial	MAC
9 <sup>th</sup> St	Sierra St	N Virginia St	Collector	LAC
9 <sup>th</sup> St	N Virginia St	Evans Ave	Arterial	LAC
9 <sup>th</sup> St	Wells Ave	El Rancho Dr	Collector	LAC
Airway Dr	Neil Rd	Longley Ln	Arterial	MAC
Arlington Ave	Skyline Blvd	6 <sup>th</sup> St	Arterial	MAC
Armstrong Ln	Susileen Dr	Yuma Ln	Collector	LAC
Arrowcreek Pkwy	Thomas Creek Rd	S Virginia St	Arterial	MAC
Avenida de Landa	Sharlands Ave	Silverado Creek Dr	Collector	LAC
Baring Blvd	McCarran Blvd	Vista Blvd	Arterial	MAC
Beaumont Pkwy	Clubhouse Dr	Avenida de Landa	Collector	LAC
Belmar Dr	Los Altos Pkwy	Earthstone Dr	Collector	LAC
Bluestone Dr	E Huffaker Ln	Patriot Blvd	Collector	LAC
Boomtown Garson Rd	I-80	Cabela Dr	Arterial	MAC
Bridge St	US Hwy 40 (Verdi)	S Verdi Rd	Collector	LAC
Brinkby Ave	Plumas St	S Virginia St	Collector	LAC
Business 395	US 395	N Virginia St	Arterial	HAC

Street Name	From	To	Functional Class	Policy Access
Cabela Dr	I-80	Boomtown Garson Rd	Arterial	MAC
California Ave	Hunter Lake Dr	S Virginia St	Arterial	LAC
Calle de la Plata Dr	Eagle Canyon Dr	Pyramid Hwy	Collector	LAC
Calle de Oro Pkwy	Cordoba Blvd	Wingfield Springs Rd	Collector	LAC
Campus Way	Neil Rd	Sierra Center Pkwy	Arterial	MAC
Cashill Blvd	McCarran Blvd	Skyline Blvd	Collector	LAC
Caughlin Pkwy	McCarran Blvd @ Cashill	McCarran Blvd @ Plumb	Collector	LAC
Center St	S Virginia St	9 <sup>th</sup> St	Arterial	LAC
Clear Acre Ln	Wedekind Rd	Dandini Blvd	Arterial	MAC
Colbert Dr	Maestro Dr	Longley Ln	Collector	LAC
Cordoba Blvd	Calle de Oro Pkwy	La Posada Dr	Collector	LAC
Court St	Arlington Ave	S Virginia St	Arterial	LAC
Damonte Ranch Pkwy	S Virginia St	Veterans Pkwy	Arterial	MAC
Dandini Blvd	US 395	Clear Acre Ln	Arterial	MAC
David Allen Pkwy	Kiley Pkwy	Lazy 5 Pkwy	Collector	LAC
Del Webb Pkwy E	Somersett Pkwy	Somersett Ridge Pkwy	Arterial	MAC
Del Webb Pkwy W	Somersett Pkwy	Somersett Ridge Pkwy	Arterial	MAC
Delores Dr	Lazy 5 Pkwy (east)	Lazy 5 Pkwy (west)	Arterial	MAC
Disc Dr	Pyramid Hwy/Sun Valley/US395 Connector	Vista Blvd	Arterial	MAC
Double Diamond Pkwy	Double R Blvd (north)	Double R Blvd (south)	Arterial	MAC
Double R Blvd	Damonte Ranch Pkwy	Longley Ln	Arterial	MAC
Durham Rd	Plumb Ln	Villanova Dr	Arterial	MAC
E Huffaker Ln	Longley Ln	Bluestone Dr	Collector	LAC
Eagle Canyon Dr	Calle de la Plata Dr	Pyramid Hwy	Arterial	MAC
Eastlake Blvd	I-580	S Virginia St	Arterial	MAC
Echo Ave	Moya Blvd	Military Rd	Arterial	LAC
Edison Way	Mill St	Rock Blvd	Arterial	MAC
El Rancho Dr	Victorian Ave	Clear Acre Ln	Arterial	MAC
Enterprise Rd	Evans Ave	Valley Rd	Arterial	MAC
Evans Ave	2 <sup>nd</sup> St	McCarran Blvd	Arterial	LAC



Street Name	From	To	Functional Class	Policy Access
Farr Ln	Queen Way	Wedekind Rd	Collector	LAC
Foothill Rd	Broken Hill Rd	S Virginia St	Collector	LAC
Galleria PkwyDr	Disc Dr	Los Altos Pkwy	Arterial	LAC
Galletti Way	Glendale Ave	4 <sup>th</sup> St	Arterial	MAC
Gateway Dr	Offenhauser Dr	South Meadows Pkwy	Arterial	MAC
Geiger Grade	S Virginia St	Storey County Line	Arterial	MAC
Gentry Way	Terminal Way	Neil Rd	Arterial	MAC
Gentry Way	S Virginia St	Kietzke Ln	Arterial	MAC
Glendale Ave	Kietzke Ln	Meredith Way	Arterial	MAC
Golden Valley Rd	N Virginia St	Dream Catcher Dr	Arterial	MAC
Greenbrae Dr	Rock Blvd	Howard Dr	Collector	LAC
Greg St	Mill St	I-80	Arterial	MAC
Grove St	S Virginia St	Harvard Way	Collector	LAC
Harvard Way	Grove St	Vassar St	Collector	LAC
Highland Ave	Evans Ave	Valley Rd	Collector	LAC
Highland Ranch Pkwy	Sun Valley Blvd	Pyramid Hwy	Arterial	MAC
Holcomb Ave	S Virginia St	Mill St	Arterial	LAC
Howard Dr	Prater Way	Sparks Blvd	Collector	LAC
Hunter Lake Dr	California Ave	Yuma Ln	Collector	LAC
Keystone Ave	California Ave	Coleman Dr	Arterial	MAC
Keystone Ave	Coleman Dr	McCarran Blvd	Arterial	LAC
Kietzke Ln	Neil Rd	Victorian Ave	Arterial	MAC
Kiley Pkwy	Pyramid Hwy	Lazy 5 Pkwy	Collector	LAC
Kings Row	McCarran Blvd	Keystone Ave	Collector	LAC
Kirman Ave	Plumb Ln	Mill St	Collector	LAC
Kirman Ave	Mill St	Kuenzli St	Arterial	MAC
Kuenzli St	2 <sup>nd</sup> St	Kietzke Ln	Arterial	MAC
Kumle	S Virginia St	Redfield Pkwy	Arterial	MAC
La Posada Dr	Pyramid Hwy	Cordoba Blvd	Arterial	MAC
Lake St	Mill St	6 <sup>th</sup> St	Collector	LAC
Lakeside Dr	Ridgeview Dr	Moana Ln	Arterial	MAC

Street Name	From	To	Functional Class	Policy Access
Lakeside Dr	Moana Ln	Plumb Ln	Collector	LAC
Las Brisas Blvd	Silverado Creek Dr	McCarran Blvd	Collector	LAC
Lazy 5 Pkwy	W Sun Valley Arterial	La Posada Dr	Arterial	MAC
Lear Blvd	Moya Blvd	Military Rd	Arterial	MAC
Lemmon Dr	N Virginia St	Ramsey Way	Arterial	MAC
Liberty St	Arlington Ave	Holcomb Ave	Arterial	LAC
Lincoln Way	McCarran Blvd	Sparks Blvd	Arterial	LAC
Locust St	Casazza Dr	Ryland St	Arterial	LAC
Longley Ln	S Virginia St	Rock Blvd	Arterial	MAC
Loop Rd	Salomon Cir	Vista Blvd	Arterial	MAC
Los Altos Pkwy	Pyramid Blvd	Vista Blvd (south)	Arterial	MAC
Lymberry St	Lakeside Dr	Moana Ln	Collector	LAC
Mae Anne Ave	Mesa Park Rd	McCarran Blvd	Arterial	MAC
Maestro Dr	Sierra Center Pkwy	Double R Blvd	Arterial	MAC
Matley Ln	Plumb Ln	Villanova Dr	Arterial	MAC
Marthiam Ave	Cashill Blvd	Susileen Dr	Collector	LAC
Mayberry Dr	W 4 <sup>th</sup> St	California Ave	Arterial	MAC
McCarran Blvd	Entire Length		Arterial	HAC
Meadowood Cir	Entire Length		Arterial	MAC
Meadowood Way	Kietzke Ln	Meadowood Mall Cir	Arterial	MAC
Mesa Park	4 <sup>th</sup> St	Mae Anne Ave	Collector	LAC
Military Rd	Lemmon Dr	Echo Ave	Arterial	MAC
Mill St	Lake St	Kirman Ave	Arterial	LAC
Mill St	Kirman Ave	McCarran Blvd	Arterial	MAC
Mill St Ext	McCarran Blvd	SouthEast Connector	Arterial	MAC
Mira Loma Dr	Longley Ln	SouthEast Connector	Collector	LAC
Moana Ln	Skyline Blvd	Plumas St	Arterial	LAC
Moana Ln	Plumas St	Neil Rd	Arterial	MAC
Mount Rose St	Arlington Ave	S Virginia St	Arterial	LAC
Mt Rose Hwy	Tahoe MPO Boundary	Timberline Dr	Arterial	MAC
Mt Rose Hwy	Timberline Dr	S Virginia St	Arterial	HAC

Street Name	From	To	Functional Class	Policy Access
Moya Blvd	Red Rock Rd	Echo Ave	Arterial	LAC
N Virginia St	Truckee River	McCarran Blvd	Arterial	LAC
N Virginia St	McCarran Blvd	Business 395	Arterial	HAC
N Virginia St	Business 395	Red Rock Rd	Arterial	MAC
N Virginia St	White Lake Pkwy	Village Pkwy	Arterial	MAC
N Wingfield Pkwy	Vista Blvd	Wingfield Springs Rd	Collector	LAC
Neighborhood Way	Eagle Canyon Dr	North terminus	Arterial	MAC
Neil Ln	Meadowood Mall Cir	Neil Rd	Arterial	MAC
Neil Rd	Kietzke Ln	Gentry Way	Arterial	LAC
Neil Way	Meadowood Mall Cir	Neil Rd	Arterial	MAC
Nichols Blvd	McCarran Blvd	Howard Dr	Arterial	MAC
Nugget Ave	Rock Blvd	McCarran Blvd	Arterial	MAC
Oddie Blvd	Wells Ave	Pyramid Way	Arterial	MAC
Offenhauser Dr	Portman Ave	Gateway Dr	Arterial	MAC
Old US-395	Eastlake Blvd	S Virginia St	Arterial	MAC
Parr Blvd	N Virginia St	US 395	Arterial	LAC
Patriot Blvd	S Virginia St	Bluestone Dr	Arterial	MAC
Peckham Ln	Lakeside Dr	Longley Ln	Arterial	MAC
Pembroke Dr	McCarran Blvd	SouthEast Connector	Collector	LAC
Plumas St	Ridgeview Dr	California Ave	Arterial	MAC
Plumb Ln	McCarran Blvd	Terminal Way	Arterial	MAC
Portman Ave	Bluestone Dr	Offenhauser Dr	Arterial	MAC
Prater Way	Galletti Way	McCarran Blvd	Arterial	LAC
Prater Way	McCarran Blvd	E of Vista Blvd	Arterial	MAC
Prototype Dr	Gateway Dr	Double R Blvd	Arterial	LAC
Putnam Dr	Washington St	Sierra St	Arterial	LAC
Pyramid Hwy	Queen Way	Calle de la Plata Dr	Arterial	HAC
Pyramid Hwy	Calle de la Plata Dr	Winnemucca Ranch Rd	Arterial	MAC
Pyramid Way	Nugget Ave	Queen Way	Arterial	MAC
Queen Way	Farr Ln	Pyramid Hwy	Collector	LAC
Raggio Pkwy	Dandini Blvd (east)	Dandini Blvd (west)	Arterial	MAC

Street Name	From	To	Functional Class	Policy Access
Ralston St	2 <sup>nd</sup> St	University Terrace	Collector	LAC
Red Rock Rd	N Virginia St	Nevada/California Border	Arterial	MAC
Redfield Pkwy	Kietzke Ln	Kumle Ln	Arterial	MAC
Richard Springs Blvd	Lazy 5 Pkwy (future)	Eagle Canyon Dr	Arterial	MAC
Ridgeview Dr	Plumas St	Lakeside Dr	Arterial	MAC
Rio POCO Rd	McCarran Blvd	Reggie Rd	Collector	LAC
Rio Wrangler Pkwy	Damonte Ranch Pkwy	South Meadows Pkwy	Arterial	MAC
Robb Dr	I-80	Las Brisas Blvd	Arterial	MAC
Rock Blvd	McCarran Blvd (east)	Prater Way	Arterial	MAC
Rock Blvd	Prater Way	McCarran Blvd (north)	Arterial	LAC
Ryland St	Holcomb Ave	Mill St	Arterial	LAC
S Verdi Rd	I-80	Cabela Dr	Arterial	MAC
S Virginia St	US 395@Bowers Mansion	Mt Rose Hwy	Arterial	HAC
S Virginia St	Mt Rose Hwy	Plumb Ln	Arterial	MAC
S Virginia St	Plumb Ln	Truckee River	Arterial	LAC
Sadlier Way	Valley Rd	Wells Ave	Arterial	MAC
Salomon Cir	Loop Rd	Vista Blvd	Arterial	MAC
Sharlands Ave	Mae Anne Ave	Robb Dr	Arterial	MAC
Sierra Center Pkwy	S Virginia St	Maestro Dr	Arterial	MAC
Sierra Highlands Dr	McCarran Blvd	7 <sup>th</sup> St	Collector	LAC
Sierra Rose Dr	Talbot Ln	Kietzke Ln	Arterial	MAC
Sierra St	California Blvd	N Virginia	Arterial	LAC
Silver Lake Rd	Red Rock Rd	Sky Vista Pkwy	Collector	LAC
Silverada Blvd	9 <sup>th</sup> St	Wedekind Rd	Collector	LAC
Sinclair St	Holcomb Ave	Mill St	Collector	LAC
Sky Vista Pkwy	Lear Blvd	Silver Lake Rd	Collector	LAC
Sky Vista Pkwy	Silver Lake Rd	Lemmon Dr	Arterial	MAC
Skyline Blvd	McCarran Blvd	Arlington Ave	Collector	LAC
Smithridge Dr	Peckham Ln	Meadowood Mall Cir	Arterial	MAC
Somerset Pkwy	Mae Anne Ave	Del Webb Pkwy	Arterial	MAC
Somerset Ridge Pkwy	US Hwy 40 (Verdi)	Del Webb Pkwy	Arterial	MAC

Street Name	From	To	Functional Class	Policy Access
South Meadows Pkwy	S Virginia St	Rio Wrangler Pkwy	Arterial	MAC
SouthEast Connector	South Meadows Pkwy	Greg St	Arterial	HAC
Sparks Blvd	Greg St	Pyramid Hwy	Arterial	MAC
State St	S Virginia St	Holcomb Ave	Arterial	MAC
Stead Blvd	N Virginia St	Echo Ave	Arterial	MAC
Steamboat Pkwy	Damonte Ranch Pkwy	Rio Wrangler Pkwy	Arterial	MAC
Stoker Ave	4 <sup>th</sup> St	7 <sup>th</sup> St	Collector	LAC
Stonebrook Pkwy	Lazy 5 Pkwy	La Posada Dr	Arterial	MAC
Sullivan Ln	Prater Way	El Rancho Dr	Collector	LAC
Summit Ridge Rd	McCarran Blvd	W 4 <sup>th</sup> St	Collector	LAC
Sun Valley Blvd	Dandini Blvd	Highland Ranch Pkwy	Arterial	MAC
Susileen Dr	Armstrong Ln	Marthiam Ave	Collector	LAC
Sutro St	Kuenzli St	Sunvilla Blvd	Arterial	MAC
Sutro St Ext	Sunvilla Blvd	Clear Acre Ln	Arterial	MAC
Talbot Ln	Sierra Rose Dr	Redfield Pkwy	Arterial	MAC
Terminal Way	Gentry Way	Mill St	Arterial	MAC
Thomas Creek Rd	Mt Rose Hwy	Zolezzi Ln	Collector	LAC
Toll Rd	Geiger Grade	Comstock Estates Dr	Collector	LAC
University Terrace	Vine St	Sierra St	Collector	LAC
US Hwy 40 (Verdi)	Bridge St	I-80 (east)	Arterial	MAC
Valley Rd	4 <sup>th</sup> St	Enterprise Rd	Arterial	MAC
Vassar St	S Virginia St	Kietzke Ln	Arterial	LAC
Vassar St	Kietzke Ln	Terminal Way	Arterial	MAC
Veterans Pkwy	Geiger Grade	South Meadows Pkwy	Arterial	HAC
Victorian Ave	Prater Way	McCarran Blvd	Arterial	LAC
Village Pkwy	N Virginia St	North Terminus	Arterial	MAC
Villanova Dr	Harvard Way	US 395	Collector	LAC
Villanova Dr	US 395	Terminal Way	Arterial	LAC
Vine St	2 <sup>nd</sup> St	University Terrace	Collector	LAC
Vista Blvd	I-80	Wingfield Pkwy	Arterial	MAC
Vista Blvd	Wingfield Pkwy	Campello Dr	Collector	LAC

Street Name	From	To	Functional Class	Policy Access
Vista Knoll Parkway	Sky Vista Pkwy	Lemmon Dr	Collector	LAC
W Huffaker Ln	Meadow Vista Ct	S Virginia St	Collector	LAC
W Sun Valley Arterial	Pyramid Hwy/Sun Valley/US 395 Connector	Eagle Canyon Rd	Arterial	HAC
Washington St	Putnam Dr	2 <sup>nd</sup> St	Collector	LAC
Wedekind Rd	Sutro St	Farr Ln	Collector	LAC
Wedge Pkwy	Mt Rose Hwy	Arrowcreek Pkwy	Arterial	MAC
Wells Ave	S Virginia St	Ryland St	Arterial	LAC
Wells Ave	Ryland St	Oddie Blvd	Arterial	MAC
West St	6 <sup>th</sup> St	5 <sup>th</sup> St	Arterial	MAC
White Lake Pkwy	Village Pkwy	N Virginia St	Arterial	MAC
Windmill Farms Blvd	Pyramid Hwy	Kiley Pkwy	Arterial	MAC
Wingfield Hills Rd	Lazy 5 Pkwy	Vista Blvd (east)	Arterial	MAC
Wingfield Springs Rd	N Wingfield Pkwy	Calle de Oro Pkwy	Collector	LAC
York Way	Rock Blvd	McCarran Blvd	Collector	LAC
Yuma Ln	Armstrong Ln	Hunter Lake Dr	Collector	LAC
Zolezzi Ln	Thomas Creek Rd	Arrowcreek Pkwy	Collector	LAC

# **Appendix C**

## **Petition Templates**



# WASHOE COUNTY

## COMMUNITY SERVICES DEPARTMENT

### Engineering & Capital Projects

#### Washoe County Traffic Calming Petition

**Read the "Washoe County Traffic Calming & Traffic Engineering Request Policy" before starting the petition below!!**

This petition must be signed by at least 20% of residents and/or business owners along the study roadway(s). Failure to obtain a sufficient number of signatures will result in the petition being denied. Note that only one signature per address will count toward the required number of petitioners.

This petition must be completed in full and returned to: Washoe County Community Services Department, Attn: Engineering Division - Traffic, 1001 E. 9<sup>th</sup> Street, Reno, NV 89512 or [engineering@washoecounty.us](mailto:engineering@washoecounty.us)

**Primary Contact Person** – Will serve as liaison between petitioners and Washoe County

Name: \_\_\_\_\_ Address: \_\_\_\_\_  
 Telephone: \_\_\_\_\_  
 Email: \_\_\_\_\_

**Study Roadway(s)** – Please include the limits of the study area for each roadway identified below. If this petition is regarding a specific intersection, please include the names of the intersecting roadways.

Roadway 1: \_\_\_\_\_  
 Roadway 2: \_\_\_\_\_  
 Roadway 3: \_\_\_\_\_  
 Roadway 4: \_\_\_\_\_

**Problem Statement** – Please describe the safety issue observed on the study roadway(s)/intersection(s)

\_\_\_\_\_  
 \_\_\_\_\_  
 \_\_\_\_\_  
 \_\_\_\_\_  
 \_\_\_\_\_  
 \_\_\_\_\_  
 \_\_\_\_\_

**Requested Traffic Calming Device/Measure (if any suggestions):**

\_\_\_\_\_



**INTEGRITY**



**EFFECTIVE COMMUNICATION**



**QUALITY PUBLIC SERVICE**





# WASHOE COUNTY

## COMMUNITY SERVICES DEPARTMENT

### Engineering & Capital Projects

#### Washoe County Traffic Engineering - Collector/Local Roadway Project Petition

**Read the "Washoe County Traffic Calming & Traffic Engineering Request Policy" before starting the petition below!!**

This petition must be signed by at least 20% of residents and/or business owners along the study roadway(s). Failure to obtain a sufficient number of signatures will result in the petition being denied. Note that only one signature per address will count toward the required number of petitioners.

This petition must be completed in full and returned to: Washoe County Community Services Department, Attn: Engineering Division - Traffic, 1001 E. 9<sup>th</sup> Street, Reno, NV 89512 or [engineering@washoecounty.us](mailto:engineering@washoecounty.us)

**Primary Contact Person** – Will serve as liaison between petitioners and Washoe County

Name: \_\_\_\_\_ Address: \_\_\_\_\_  
Telephone: \_\_\_\_\_  
Email: \_\_\_\_\_

**Study Roadway(s)** – Please include the limits of the study area for each roadway identified below. If this petition is regarding a specific intersection, please include the names of the intersecting roadways.

Roadway 1: \_\_\_\_\_  
Roadway 2: \_\_\_\_\_  
Roadway 3: \_\_\_\_\_  
Roadway 4: \_\_\_\_\_

**Problem Statement** – Please describe the safety issue observed on the study roadway(s)/intersection(s)

\_\_\_\_\_  
\_\_\_\_\_  
\_\_\_\_\_  
\_\_\_\_\_  
\_\_\_\_\_  
\_\_\_\_\_

**Requested Enhancement or Traffic Control Device (if any suggestions):**

\_\_\_\_\_



INTEGRITY



EFFECTIVE COMMUNICATION



QUALITY PUBLIC SERVICE



# WASHOE COUNTY

## COMMUNITY SERVICES DEPARTMENT

### Engineering & Capital Projects

#### Washoe County Traffic Engineering - Arterial Roadway Project Petition

**Read the "Washoe County Traffic Calming & Traffic Engineering Request Policy" before starting the petition below!!**

This petition must be signed by at least 40% of residents and/or business owners along the study roadway(s). Failure to obtain a sufficient number of signatures will result in the petition being denied. Note that only one signature per address will count toward the required number of petitioners.

This petition must be completed in full and returned to: Washoe County Community Services Department, Attn: Engineering Division - Traffic, 1001 E. 9<sup>th</sup> Street, Reno, NV 89512 or [engineering@washoecounty.us](mailto:engineering@washoecounty.us)

**Primary Contact Person** – Will serve as liaison between petitioners and Washoe County

Name: \_\_\_\_\_ Address: \_\_\_\_\_  
 Telephone: \_\_\_\_\_  
 Email: \_\_\_\_\_

**Study Roadway(s)** – Please include the limits of the study area for each roadway identified below. If this petition is regarding a specific intersection, please include the names of the intersecting roadways.

Roadway 1: \_\_\_\_\_  
 Roadway 2: \_\_\_\_\_  
 Roadway 3: \_\_\_\_\_  
 Roadway 4: \_\_\_\_\_

**Problem Statement** – Please describe the safety issue observed on the study roadway(s)/intersection(s)

\_\_\_\_\_  
 \_\_\_\_\_  
 \_\_\_\_\_  
 \_\_\_\_\_  
 \_\_\_\_\_  
 \_\_\_\_\_  
 \_\_\_\_\_

**Requested Enhancement or Traffic Control Device (if any suggestions):**

\_\_\_\_\_



INTEGRITY



EFFECTIVE COMMUNICATION



QUALITY PUBLIC SERVICE

#	Printed Name	Address	Email	Signature
1				
2				
3				
4				
5				
6				
7				
8				
9				
10				
11				
12				
13				
14				
15				
16				
17				
18				
19				
20				



**INTEGRITY**



**EFFECTIVE  
COMMUNICATION**



**QUALITY  
PUBLIC SERVICE**

#	Printed Name	Address	Email	Signature
21				
22				
23				
24				
25				
26				
27				
28				
29				
30				
31				
32				
33				
34				
35				
36				
37				
38				
39				
40				



**INTEGRITY**



**EFFECTIVE  
COMMUNICATION**



**QUALITY  
PUBLIC SERVICE**

#	Printed Name	Address	Email	Signature
41				
42				
43				
44				
45				
46				
47				
48				
49				
50				
51				
52				
53				
54				
55				
56				
57				
58				
59				
60				



**INTEGRITY**



**EFFECTIVE  
COMMUNICATION**



**QUALITY  
PUBLIC SERVICE**

#	Printed Name	Address	Email	Signature
61				
62				
63				
64				
65				
66				
67				
68				
69				
70				
71				
72				
73				
74				
75				
76				
77				
78				
79				
80				



**INTEGRITY**



**EFFECTIVE  
COMMUNICATION**



**QUALITY  
PUBLIC SERVICE**

#	Printed Name	Address	Email	Signature
81				
82				
83				
84				
85				
86				
87				
88				
89				
90				
91				
92				
93				
94				
95				
96				
97				
98				
99				
100				



**INTEGRITY**



**EFFECTIVE  
COMMUNICATION**



**QUALITY  
PUBLIC SERVICE**

**Appendix D**  
**Traffic Calming Requests Scoring Rubric**





# WASHOE COUNTY

## COMMUNITY SERVICES DEPARTMENT

### Engineering & Capital Projects

1001 EAST 9TH STREET  
 RENO, NEVADA 89512  
 PHONE (775) 328.3600  
 FAX (775) 328.3699

### Traffic Calming Scoring Rubric

#### Travel Speeds (40 points maximum) \_\_\_\_\_ points

The 85<sup>th</sup> percentile speed is the most common metric to identify typical travel speeds. Comparing the posted speed with the observed 85<sup>th</sup> percentile speed identifies roadways which have speeds significantly above the posted speed limits. Points will be awarded based on the difference between the posted speed and the 85<sup>th</sup> percentile speed.

Less than or equal to 5 mph difference	0 points
Greater than 5 mph and less than or equal to 7 mph	10 points
Greater than 7 mph and less than or equal to 9 mph	20 points
Greater than 9 mph and less than or equal to 11 mph	30 points
Greater than 11 mph	40 points

#### Traffic Volumes (20 points maximum) \_\_\_\_\_ points

Points will be awarded for existing Average Daily Traffic (ADT) as follows:

Less than 1,000 ADT	0 points
1,001 ADT to 1,500 ADT	5 points
1,501 ADT to 2,500 ADT	10 points
2,501 ADT to 3,500 ADT	15 points
3,501 ADT+	20 points

#### Crash Data (20 points maximum) \_\_\_\_\_ points

Points will be awarded based on the total number of crashes / mile along the roadway segment within the most recent three-year period.

0 to 5 accidents within last 3 years	0 points
6 to 10 accidents within last 3 years	5 points
11 to 15 accidents within last 3 years	10 points
16 or more accidents within last 3 years	20 points

#### Pedestrian Facilities (10 points maximum) \_\_\_\_\_ points

Continuous sidewalks on both sides of the study roadways	0 points
Discontinuous sidewalks on one or both sides of the study roadways	5 points
No Sidewalks on either side of study roadways	10 points

#### K-12 School Proximity (10 points maximum) \_\_\_\_\_ points

No K-12 Schools located within ½ mile of study roadway	0 points
One K-12 School located within ½ mile of study roadway	5 points
More than one K-12 School within ½ mile of study roadway	10 points

**Total Points** \_\_\_\_\_



INTEGRITY



EFFECTIVE  
COMMUNICATION



QUALITY  
PUBLIC SERVICE