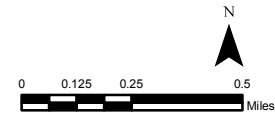


- Recharge Well
- Recharge Water Line
- ▭ Hydrobasin Boundary

GOLDEN VALLEY RECHARGE SYSTEM



Notes: The Scale and configuration of all information shown herein are approximate only and are not intended as a guide for design or survey work. Reproduction is not permitted without prior written permission from the Washoe County Community Services Department, April 2016.

Washoe County Community Services Department
Engineering & Capital Projects Division
Utility Division

P:\Lydia\Golden Valley\gw_mw\GV_hydrobasin.mxd(4/14/16)