



**Washoe County  
Tahoe Transportation  
Plan**

**CAB Meeting**

**December 5, 2022**



# Transportation Needs

- Intersection safety & operations
- Multiuse path safety & functionality, focus on SR 28
  - Gaps in network
  - Driveway crossings, narrow width, pavement condition
- Transit connectivity, bus stop accessibility
- Parking access & use





# Transportation Plan Goals

- Improve safety
- Expand connectivity
- Optimize mobility & parking
- Strengthen community vitality





# NDOT Improvements

- Pavement project underway
  - Visit [Inclinehighways.com](http://Inclinehighways.com)
- Crosswalk restriping this year



The Nevada Department of Transportation and Q&D Construction are enhancing the existing roadway and utility system along part of SR-431 and SR-28 to help preserve pavement and protect Lake Tahoe.

[Tell me more](#)





# SR 28 Signalized Intersections



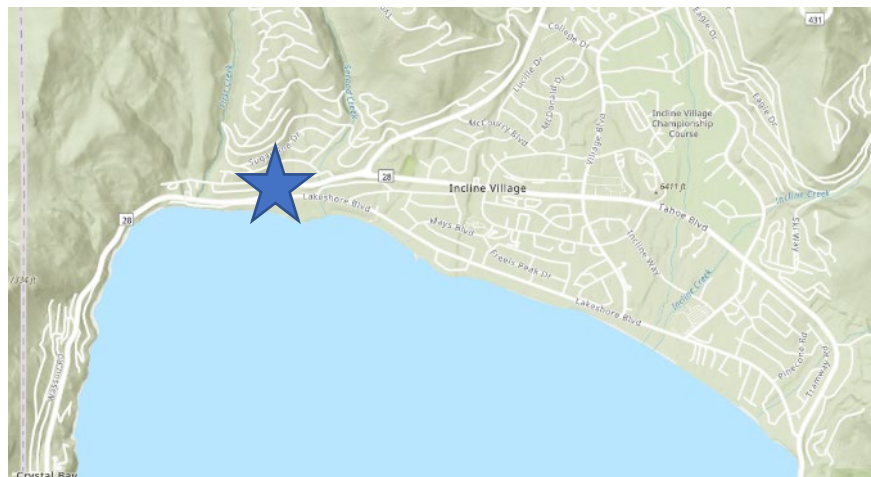
- Requests for longer pedestrian signal
- Safety & congestion concerns
- Bus stop ADA & sidewalk connectivity concerns
- RTC currently working with Washoe County & NDOT on signal timing and coordination
- Signals to be replaced next year





# SR 28 at Pinion/Lakeshore

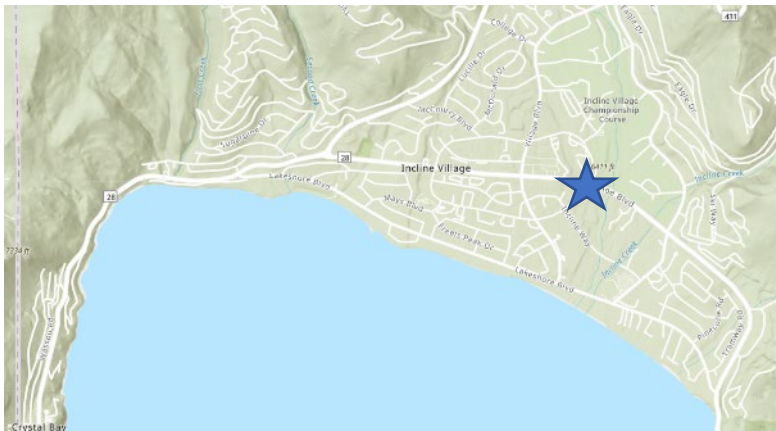
- Safety and multimodal concerns
- ADA bus stop concerns
- NDOT repaving planned for next year, looking at short term safety and operational improvements
- NDOT also considering longer term intersection improvement alternatives





# SR 28 at Southwood/Northwood (east)

- Safety & congestion concerns
- NDOT conducting intersection analysis
- Improved bus stop and crosswalk needed





# Bus Stop Accessibility Features



Pedestrian crossing with sign & flashing beacon

Level boarding area with shelter

Accessible path to the bus stop



# SR 28 Bus Stops

- Several bus stops have limited ADA accessibility & sidewalk connectivity



Draft concept for discussion purposes



# SR 28 Bus Stops & Pedestrian Access

- Improve bus stop and driveway crossing at 76 Gas Station

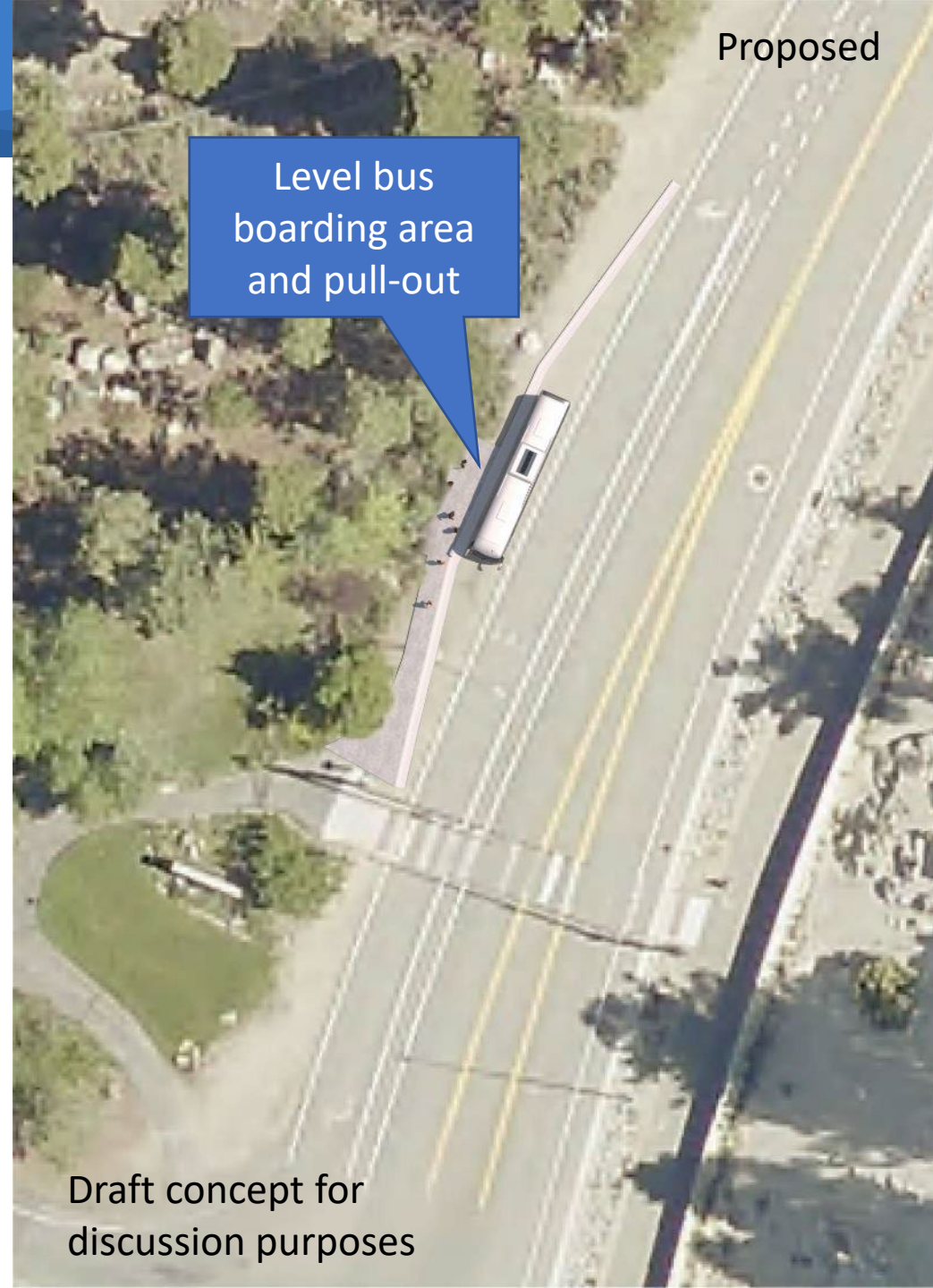


Draft concept for discussion purposes



# SR 28 Bus Stops

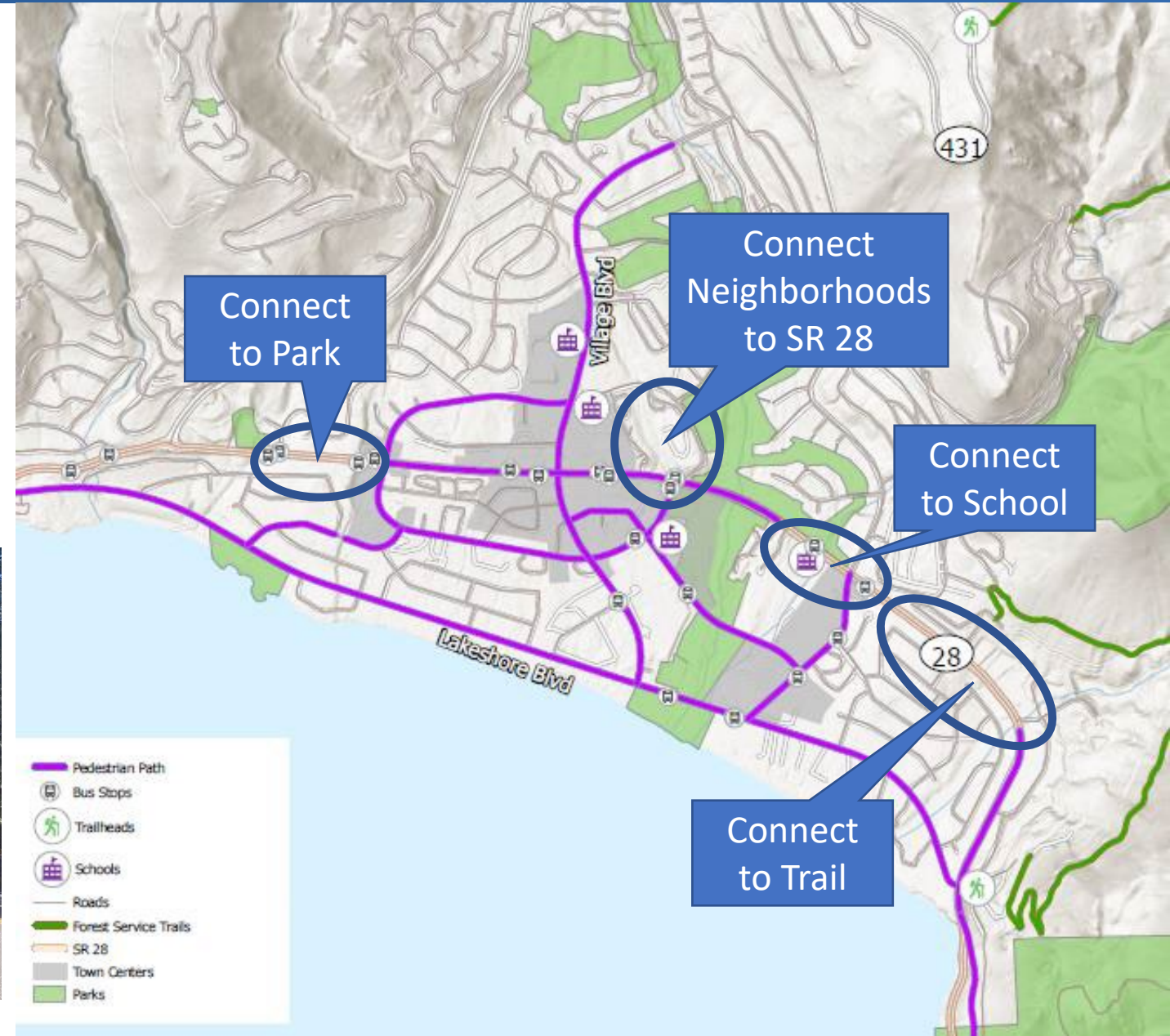
- Bus Stop at Lakeshore Dr





# Path Connectivity within Incline Village

- Opportunities to connect or extend multiuse paths
- Options for phased extensions to support community connectivity





# Path Safety within Incline Village

- Improve pedestrian visibility and motorist awareness at driveway crossings

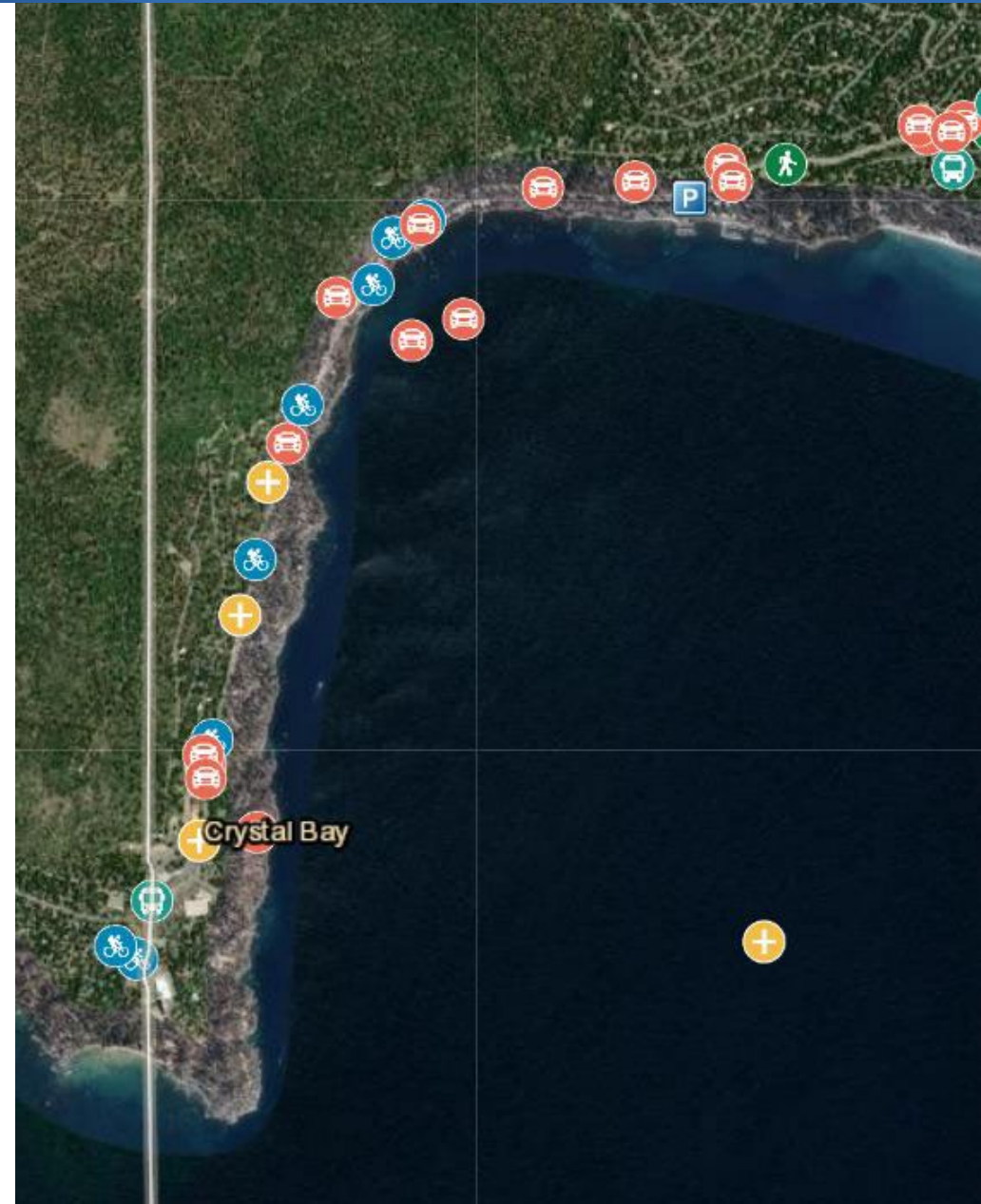


Draft  
concept  
for  
discussion  
purposes



# SR 28 between Incline Village & Crystal Bay

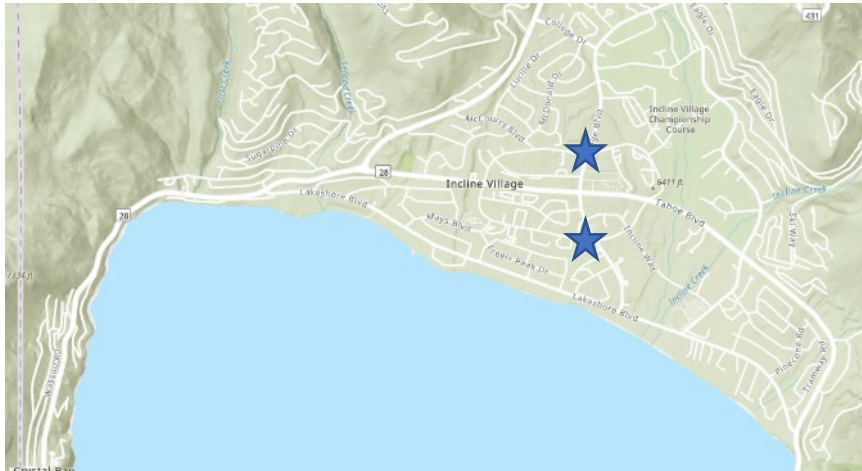
- Safety, multimodal connectivity & traffic congestion concerns
- Environmental analysis needed for multiuse path (identified in RTP)
- Connection of path to California and Spooner will better distribute parking demand





# Village Blvd at Southwood & Northwood Blvds

- Concerns
  - Wide pavement for ped crossings
  - High travel speeds
  - Extended wait for turns from side streets





# Village Blvd at Northwood Boulevard

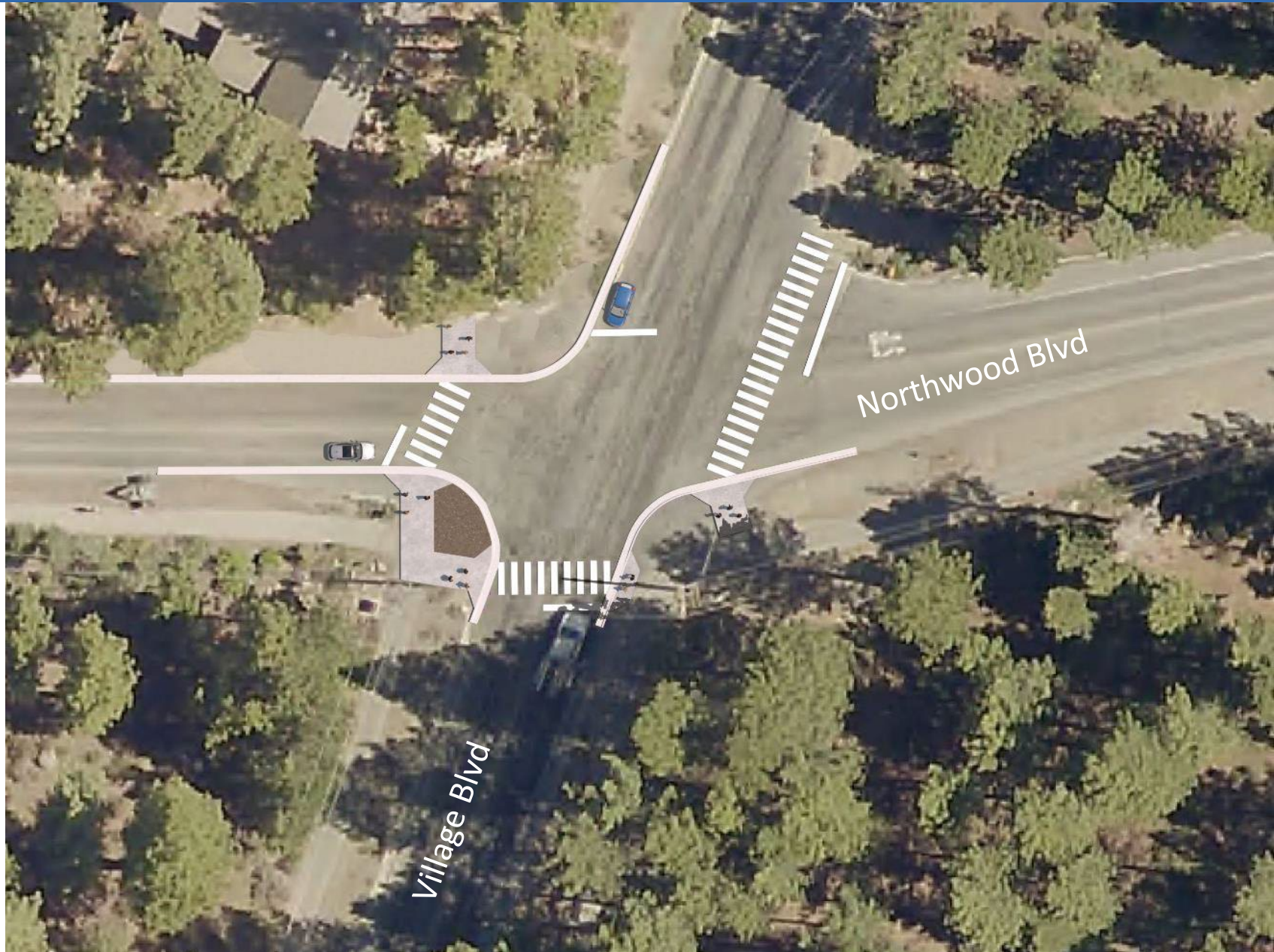


Existing



# Village Blvd at Northwood Boulevard

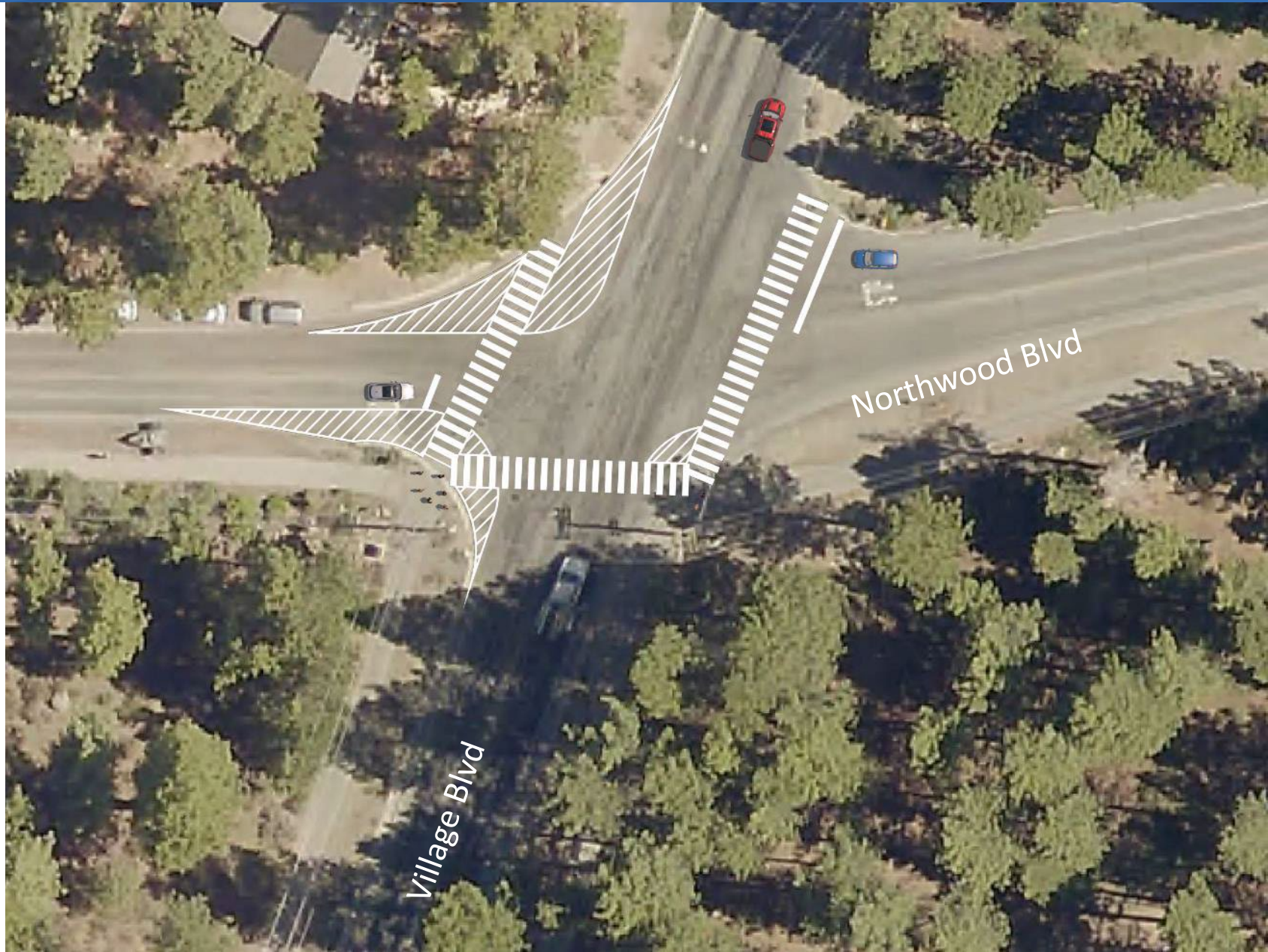
- Options to Consider
  - **4-way stop**
  - Reconfigure intersection to improve pedestrian crossing
  - Roundabout





# Village Blvd at Northwood Boulevard

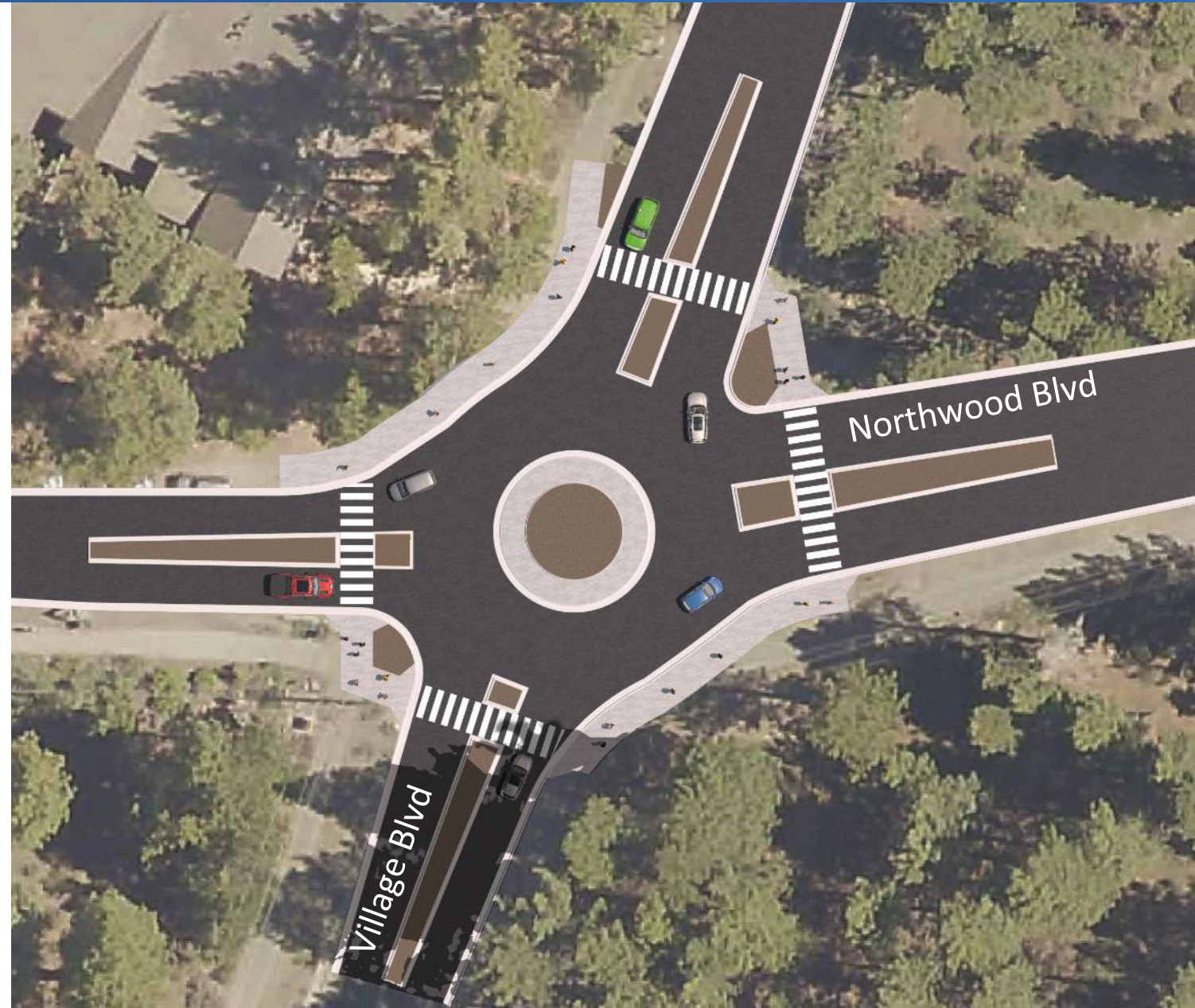
- Options to Consider
  - 4-way stop
  - **Reconfigure intersection to improve pedestrian crossing**
  - Roundabout





# Village Blvd at Northwood Boulevard

- Options to Consider
  - 4-way stop
  - Reconfigure intersection to improve pedestrian crossing
  - **Roundabout**





# Parking Concerns

- Country Club Ln to Village Blvd
  - Current parking patterns damage water quality drainage improvements
- Options to consider
  - No parking signage & enforcement
  - TART Connect marketing
  - Convert portions of Lakeshore to one-way demonstration and add on-street parking





# One-Way Demonstration: Add On-Street Parking



Draft concept for discussion purposes



# Parking Concerns

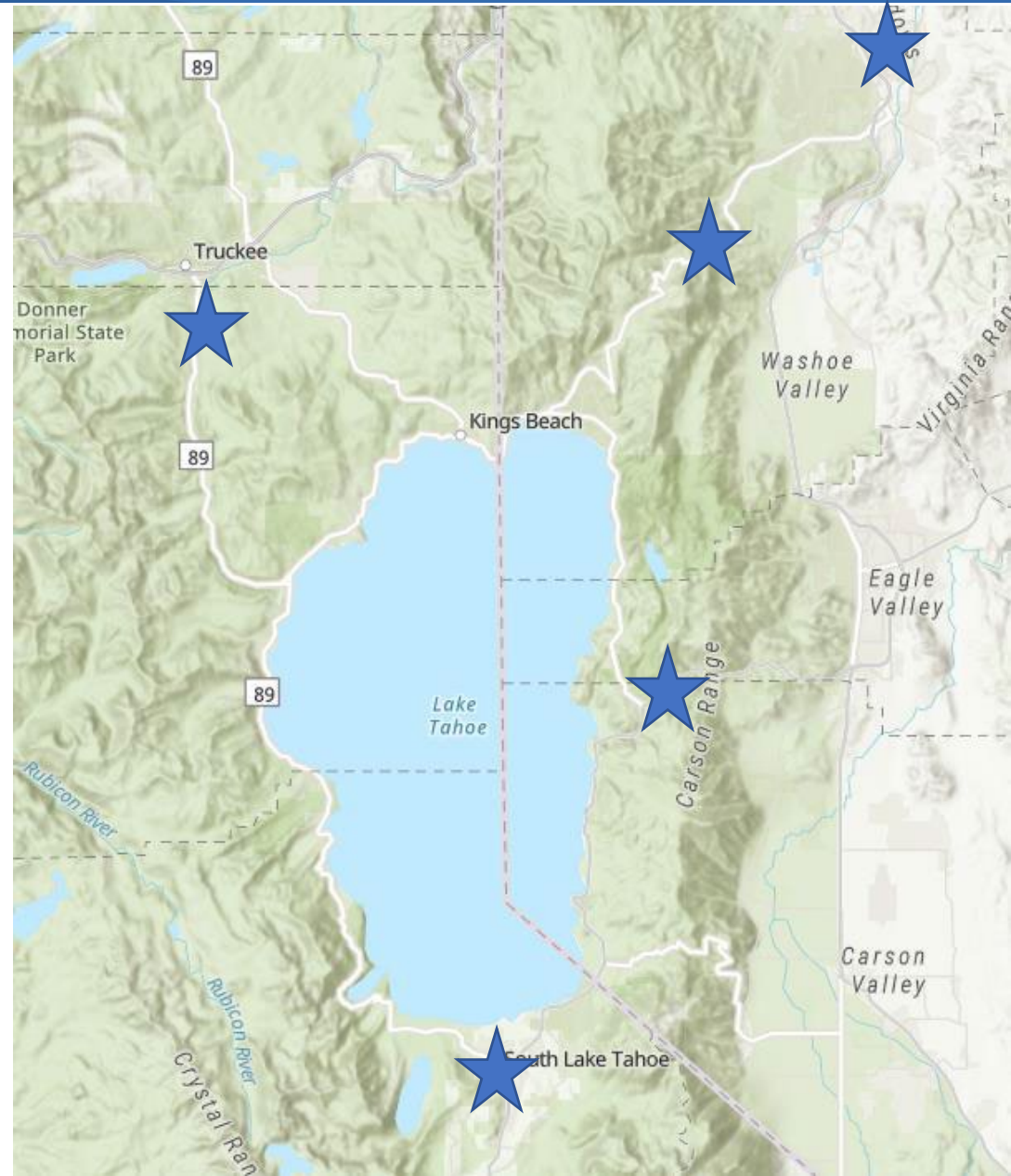
- Northwood Blvd & McCourry Blvd
  - Concerns about boat & RV parking
  - Parking on path & blocking fire hydrants
- Options to consider:
  - Formalize parking areas
  - No parking signage & enforcement
  - Place barriers to prevent parking in some areas
  - Site analysis for additional RV/boat parking





# Regional Transit & Parking Vision

- Expand fixed route/microtransit services connecting outside Tahoe Basin
- Link to real-time parking availability data
- Identify shared parking at underused commercial parking lots
- Expand park & ride options
  - Spooner Summit, Mt. Rose Hwy, Reno, Carson City, Truckee, South Lake Tahoe





# RTC VANPOOL

- Reduce commuting costs
- Share a ride with 5-14 people
- Volunteer driver
- Vehicle cost subsidized by RTC





# Main Street Concept

- Initiative developed by Incline Village Business Association
- Support community vitality and develop a “community center of town”
- Recognize historical & cultural themes: lumber, railroad, Ponderosa Ranch, outdoor recreation
- Support workforce housing needs
- Improve services for residents
- Complete street improvements





# Technology & Data Needs

- Lack of broadband/wifi connectivity
- Expansion would aid in real time traffic and parking information, access to micromobility and wayfinding
- SMART grant offers potential funding source for:
  - Sensors
  - Real time data
  - Traffic signal upgrades
  - Systems integration

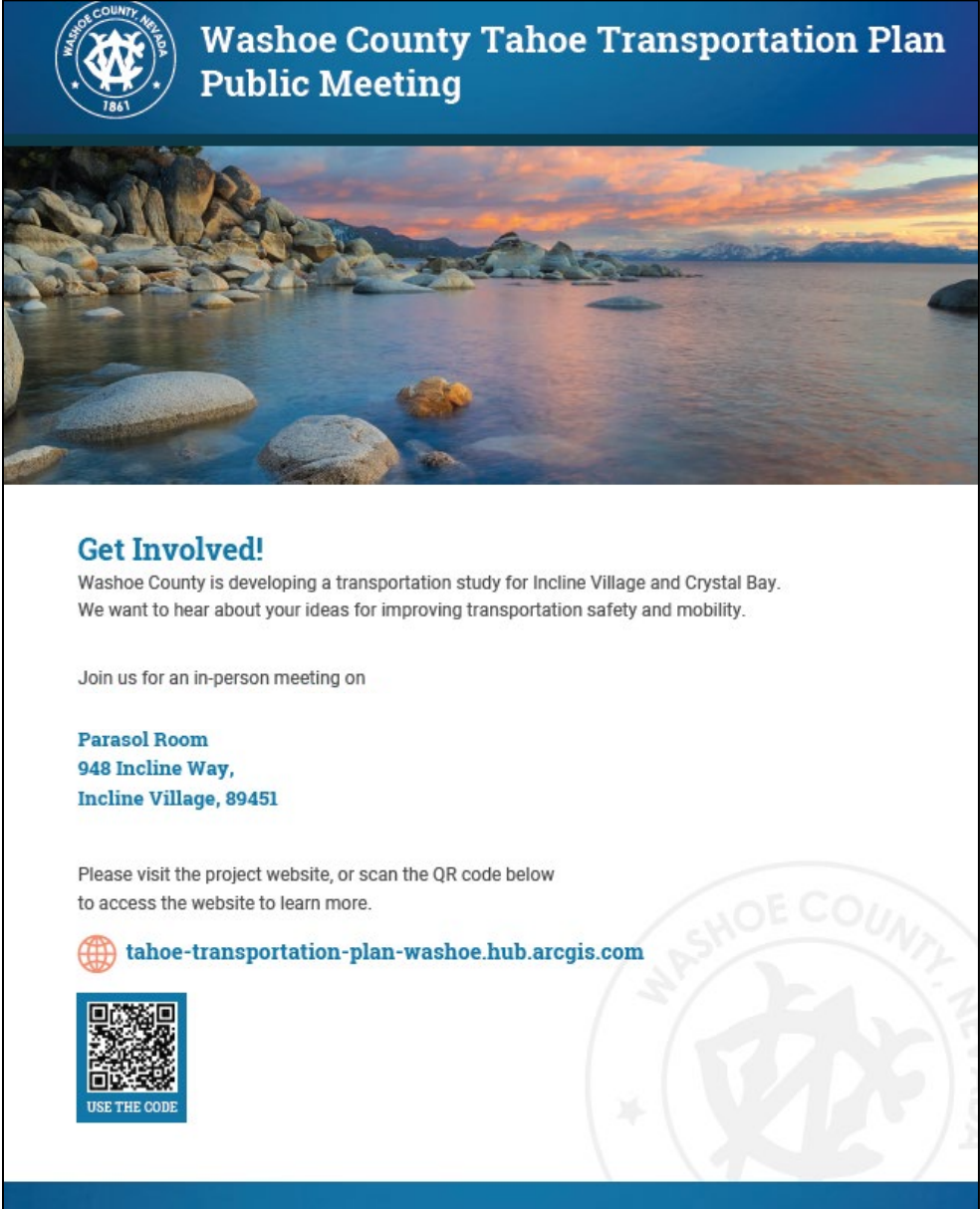
The logo for the SMART grant program. The word "SMART" is written in a bold, blue, sans-serif font. The letter "A" is stylized, with a green triangle pointing upwards and a blue triangle pointing downwards, meeting at the center. A thick black horizontal line is positioned below the letters "M", "A", and "R".

Strengthening Mobility and Revolutionizing Transportation (SMART), a grant program from US Dept. of Transportation, to be launched this month



# Next Steps

- Integrate input from public meeting and CAB
- Identify agency champions for initiatives
- Develop draft report for public comment



The flyer features a blue header with the Washoe County Nevada logo (1861) and the title "Washoe County Tahoe Transportation Plan Public Meeting". Below the header is a scenic photograph of a lake with large rocks and mountains in the background under a sunset sky. The main text area is white with blue accents. It includes a "Get Involved!" section, a paragraph about the transportation study, meeting details for the Parasol Room, and a QR code with the text "USE THE CODE". A large, faint watermark of the Washoe County logo is visible in the bottom right corner.


**Washoe County Tahoe Transportation Plan  
Public Meeting**


**Get Involved!**  
Washoe County is developing a transportation study for Incline Village and Crystal Bay. We want to hear about your ideas for improving transportation safety and mobility.

Join us for an in-person meeting on

**Parasol Room  
948 Incline Way,  
Incline Village, 89451**

Please visit the project website, or scan the QR code below to access the website to learn more.

 [tahoe-transportation-plan-washoe.hub.arcgis.com](https://tahoe-transportation-plan-washoe.hub.arcgis.com)

  
USE THE CODE



**Thank You!**

