



Nevada Cares Campus Capital Campaign / Construction

May 2, 2022
Incline Village/Crystal Bay
Citizen's Advisory Board Meeting



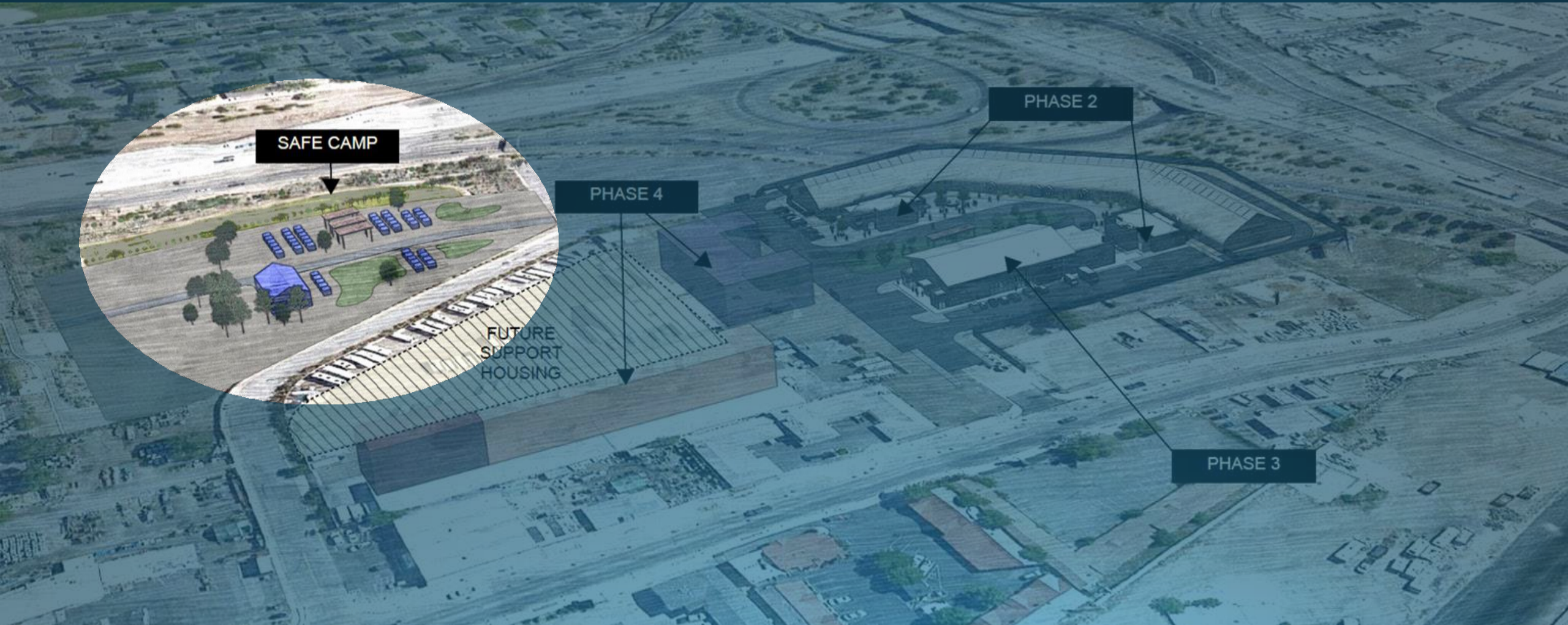


Campus Overview/Construction Phasing





Cares Campus – Safe Camp





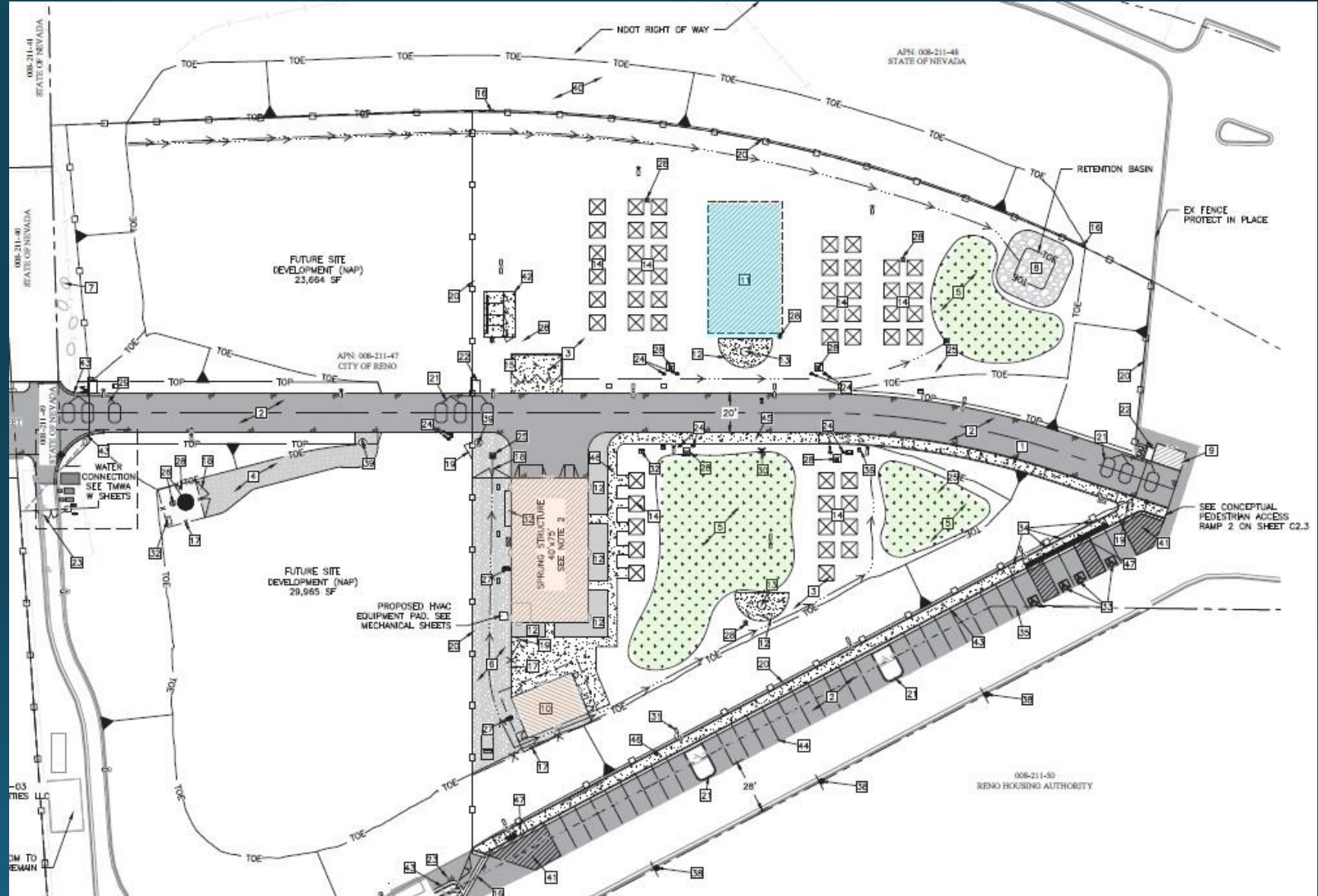
Cares Campus - Safe Camp ModPods

- Unit size: 8ft x 8ft x 8ft
- Heated and cooled
- Units purchased:
 - 50 for Safe Camp
 - 2 for isolation at Cares Campus





Safe Camp Site Plan





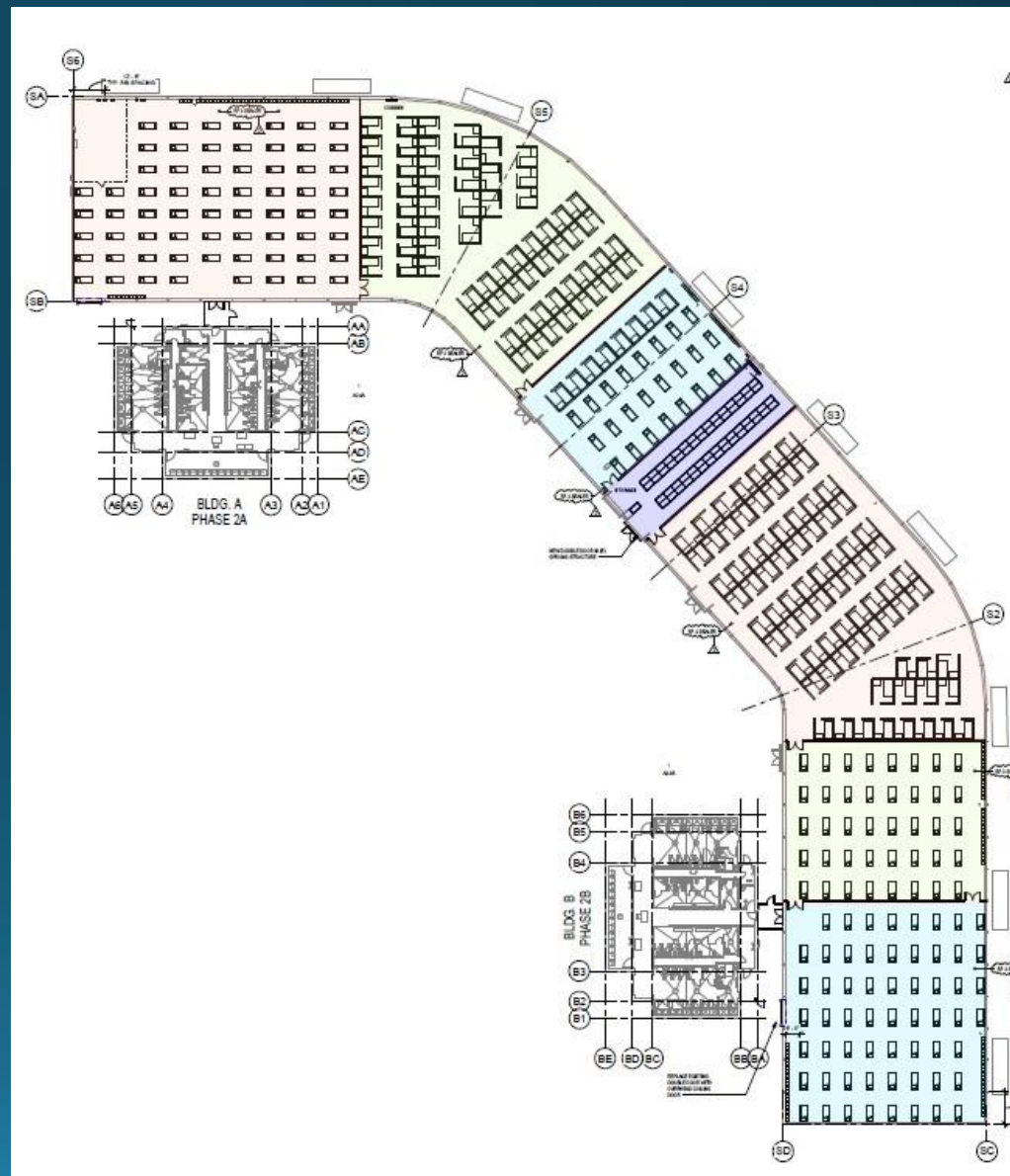
Cares Campus—Phase II

Emergency Shelter Improvements & Shower / Restroom / Laundry Buildings



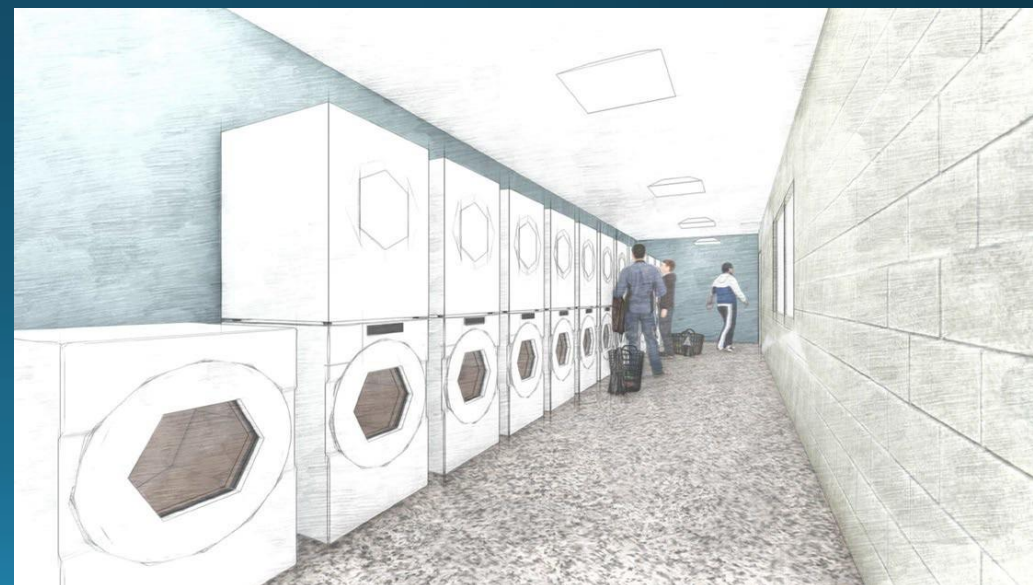
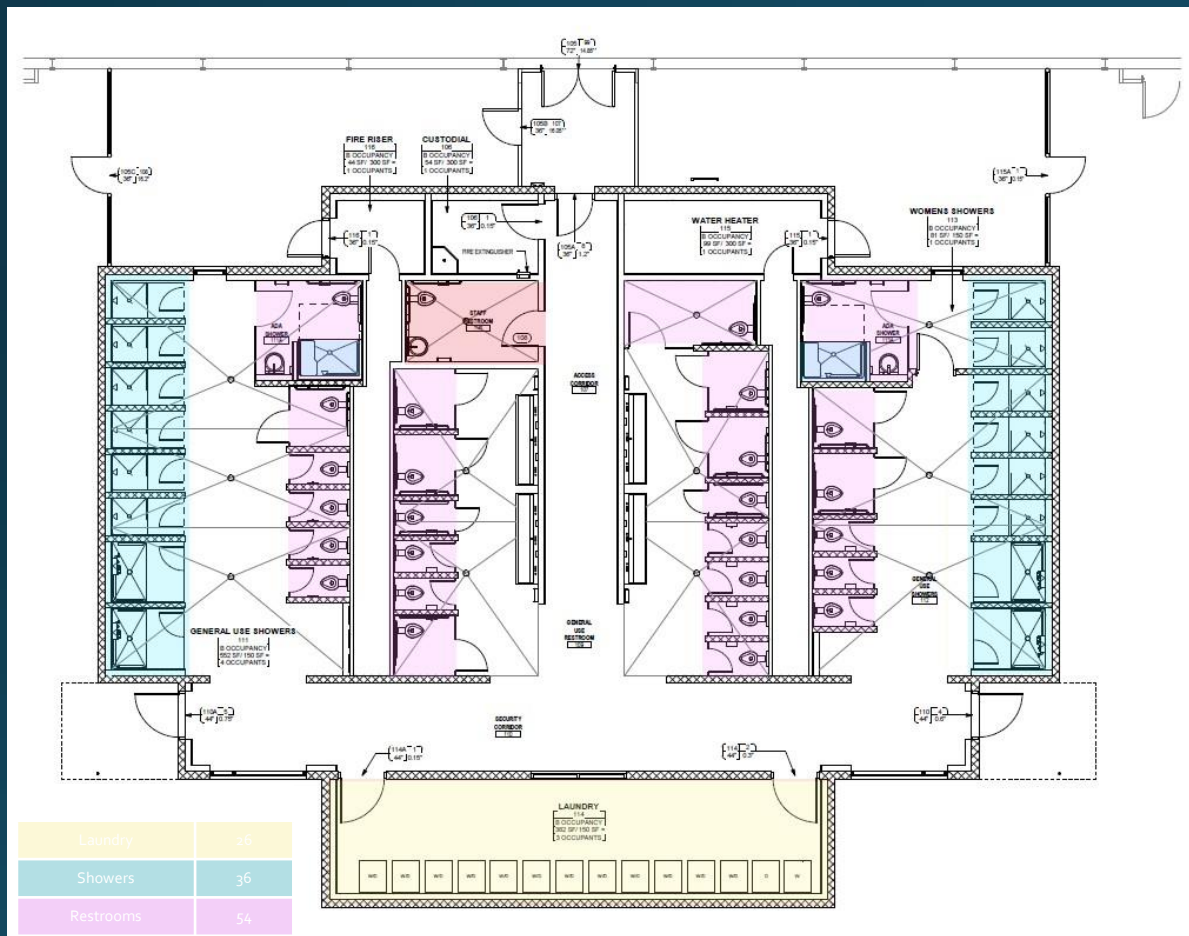


Cares Campus - Sprung Updates





Cares Campus - Showers/Restrooms/Laundry





Cares Campus—Phase III

Welcome Center / Case Management & Therapy / Staff Offices / Dining Hall



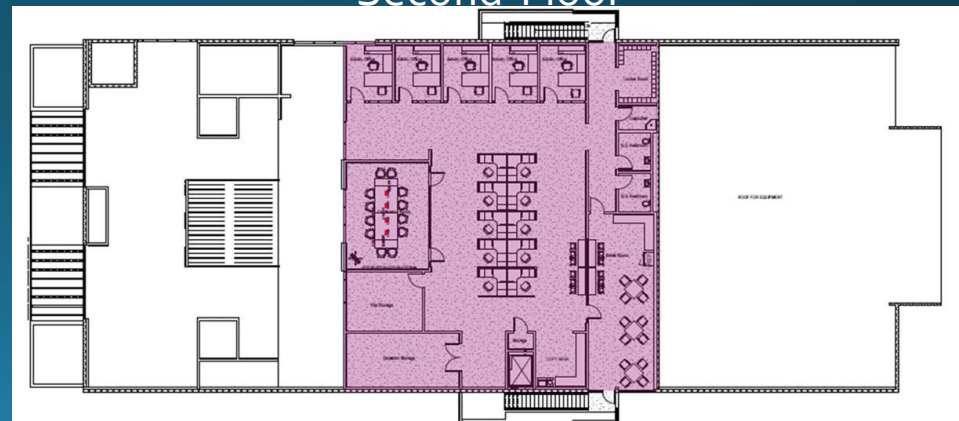
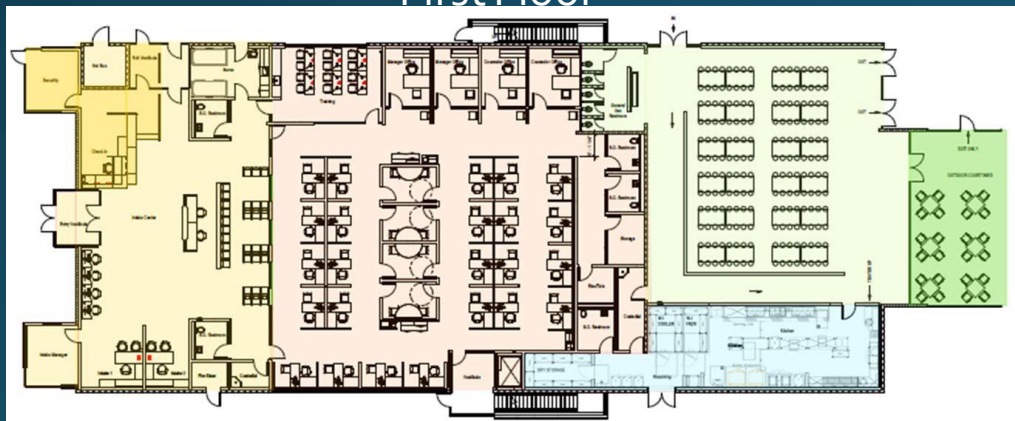


Welcome Center / Case Management & Therapy / Offices / Dining



First Floor

Second Floor





Cares Campus - Dining Hall



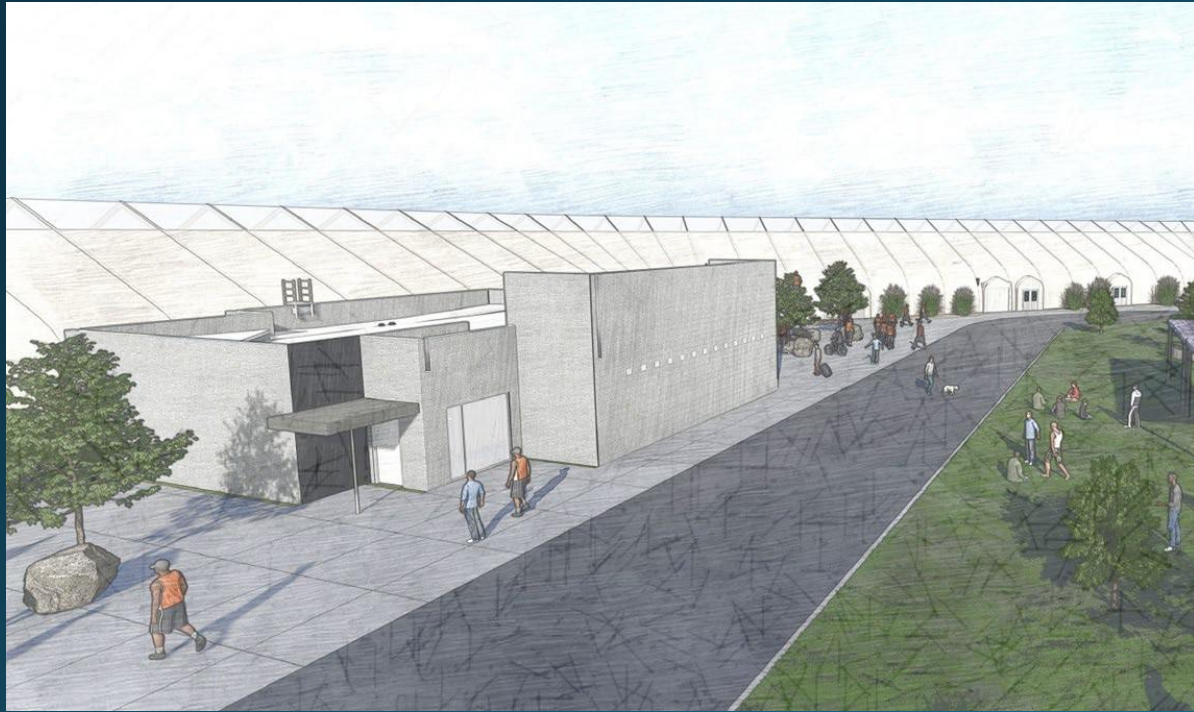


Cares Campus Welcome Center – Diversion / Intake Security / Case Management





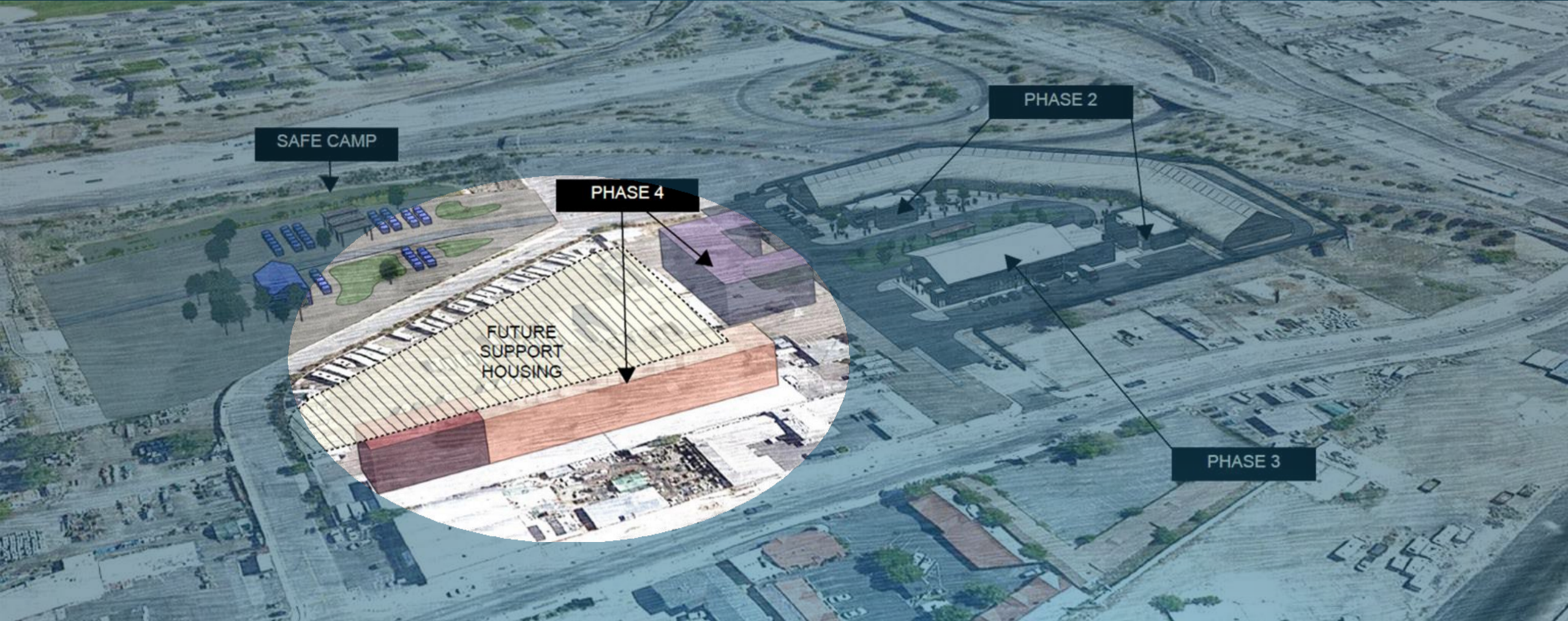
Cares Campus - Exterior and Green Space

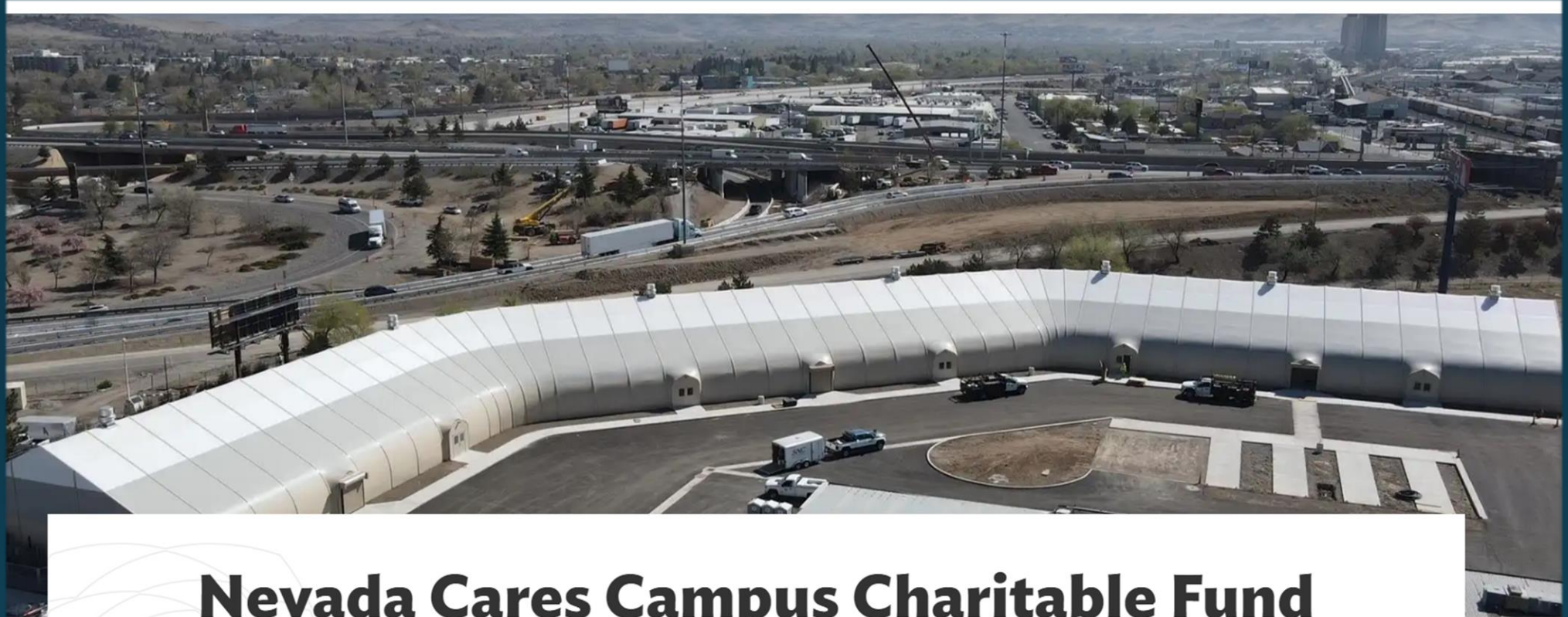




Cares Campus—Phase IV

Resource Center / Supportive Housing





Nevada Cares Campus Charitable Fund

The Nevada Cares Campus is under the direction of Washoe County. To contact the Nevada Cares Campus directly, please call 775-329-4141.

The Nevada Cares Campus is under the direction of Washoe County. To contact the Nevada Cares Campus

Nevada Cares Campus Charitable Fund

Fundraising

To improve the lives of our **most vulnerable neighbors** by cultivating and soliciting important private philanthropic dollars to match the community's significant public investments to secure community buy-in and long-term support.

It takes a village.



Committee

Cindy Carano, Chairman
Women's Giving Circle

Ron Codd, Co-Chair
Montreux Cares Committee

**Eaton Dunkelberger,
President & CEO**
*Community Foundation
of Northern Nevada*

**Allison Gorelick, Managing
Member**
Gorelick Real Estate Advisors

Commissioner Alexis Hill
Washoe County

Councilwoman Neoma Jardon
City of Reno

Mike Kazmierski, President & CEO
EDAWN

Councilwoman Charlene Bybee
City of Sparks

Chad Martinson, CEO
ACOVA Integrated Health

Alex Stettinski, Executive Director
Downtown Reno Partnership

**Kate Thomas, Assistant County
Manager**
Washoe County

Doug Thornley, City Manager
City of Reno

Par Tolles, Founder & CEO
Tolles Development

Abbi Whitaker, Owner & President
The Abbi Agency

Fund Raising Partner

The Blueprint Collaborative

- Gretchen Kelley Bietz
- Rachel Tatro
- Amelia Keller



Capital to Date

Goal: \$8.6M

\$3,563,155 Received and Pledged

- One donation of \$1,000,000
- 3 donations of \$200,000 or more
- Brand-new philanthropic dollars in our community
- Montreux Cares Effort >\$1,000,000

Fundraising components

PRIVATE INVESTMENT PHASE TWO CAPITAL CAMPAIGN GOAL

Component	Cost
Case Management Facility	\$1,500,000
Resource Center Land Purchase	\$2,500,000
Cafeteria and Serving Kitchen	\$2,000,000
Resource Center Renovation	\$1,500,000
Outdoor Green Space, Pet Facilities, Campus Entrance Sign	\$1,000,000
Updated Campaign Costs (5% of campaign total, matches national average)	\$400,000
	\$8,900,000

Potential Funders



- Individuals
- Foundations
- Local Businesses & International Corps
- Faith Based Organizations
- In-Kind Donors
- Quasi-Public Entities

To make a gift please visit:

nevadafund.org/

nevada-cares-campus-fund



NEVADA
CARES CAMPUS
WASHOE COUNTY

