

The attached document was submitted to the **Washoe County Board of Commissioners** during the meeting

held on June 13, 2017

by Managers office

for Agenda Item No. 6

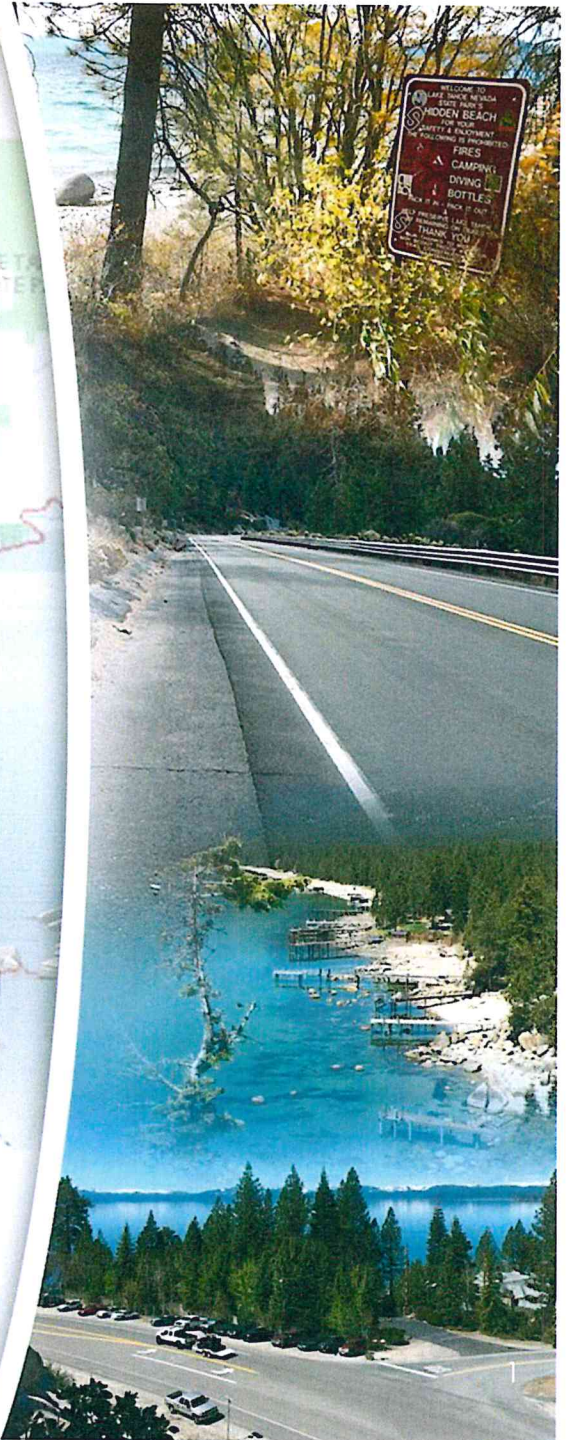
and included here pursuant to NRS 241.020(7) as amended by AB65 of the 2013 Legislative Session.

State Route 28 Shared Use Path & Safety/Water Quality Enhancements

Nick Johnson, PE
NDOT Senior Project Manager
June 13, 2017



Agenda Item #4



Project Partners



**TAHOE
REGIONAL
PLANNING
AGENCY**



TAHOE FUND

Together Creating a Legacy



**Tahoe Transportation
DISTRICT**



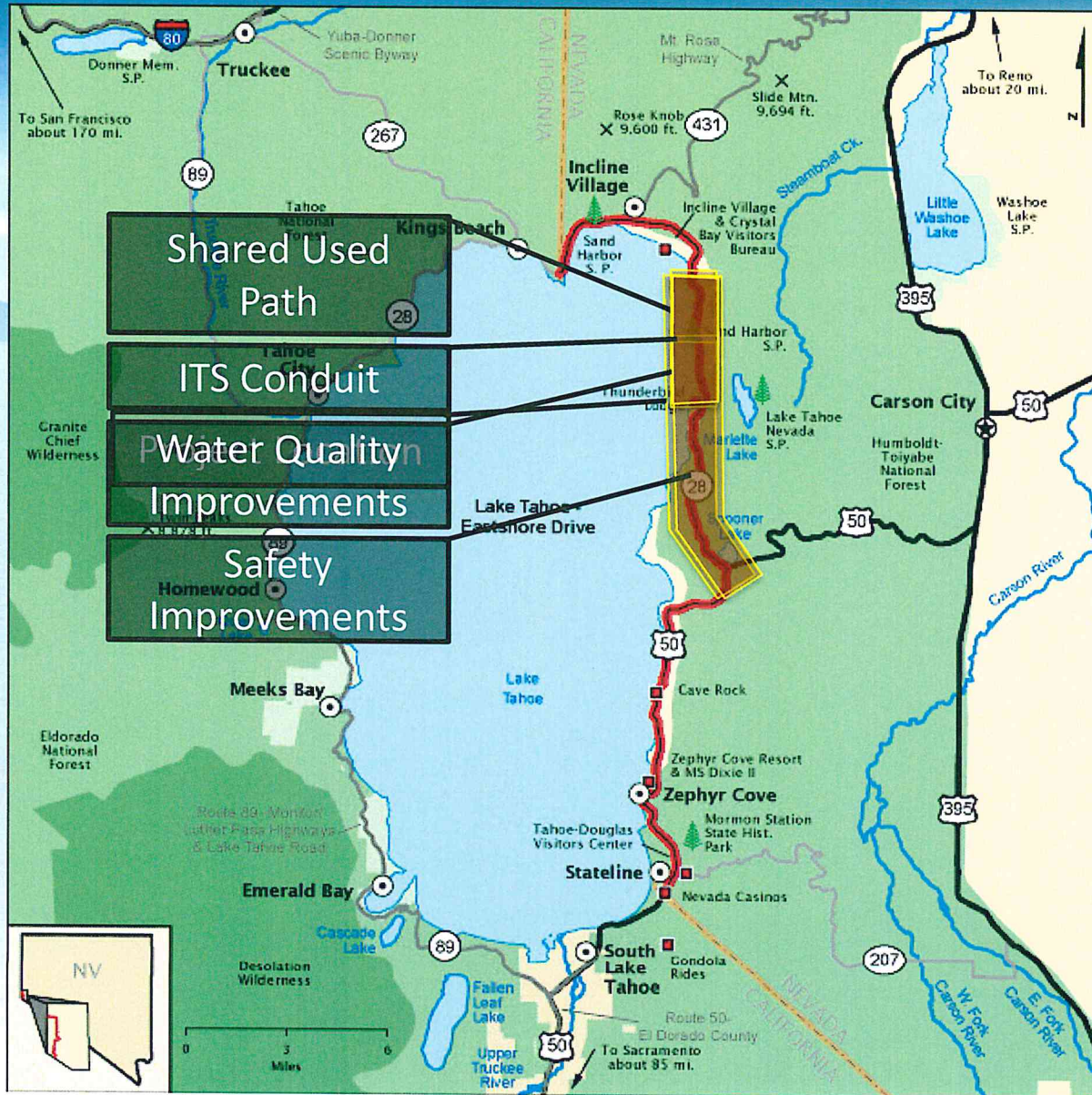
DEPARTMENT OF
**CONSERVATION &
NATURAL RESOURCES**



Great people. Great places.



Project Location



Why is this project needed?

- Nevada State Route 28 (SR 28)
 - Only access route for over one million recreationists and 2.6 million-plus vehicles per year
- Limited parking and lack of safe, non-motorized access to popular destinations
 - Large numbers of motorists parking along narrow, unpaved shoulders
 - Creates additional roadside safety hazards
 - Creates erosion issues impacting water quality and lake clarity
- Proposed SR 28 Shared Use Path & Safety/Stormwater Enhancements Project takes an integrated approach
 - Improves safety, mobility, water quality, and recreational access



Safety Improvements

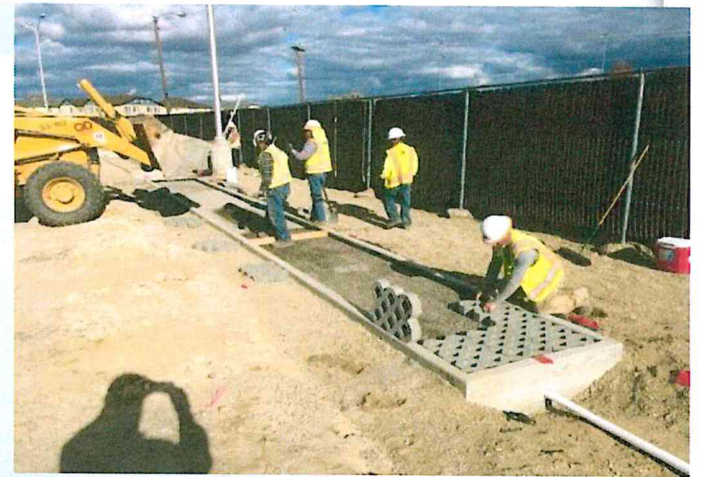
- Relocating and organizing shoulder-parking to new parking areas at northern trailhead
- **3 mile No Parking Zone along SR 28 from Incline to Sand Harbor**
- SR 28 Centerline rumble strip from Spooner Summit at US-50 to South of Incline Village
- Formalize maintenance and emergency pullouts
- Pedestrian Crossing on SR 28 @ Lakeshore Boulevard
- “Sand Harbor Lot Full” Signage



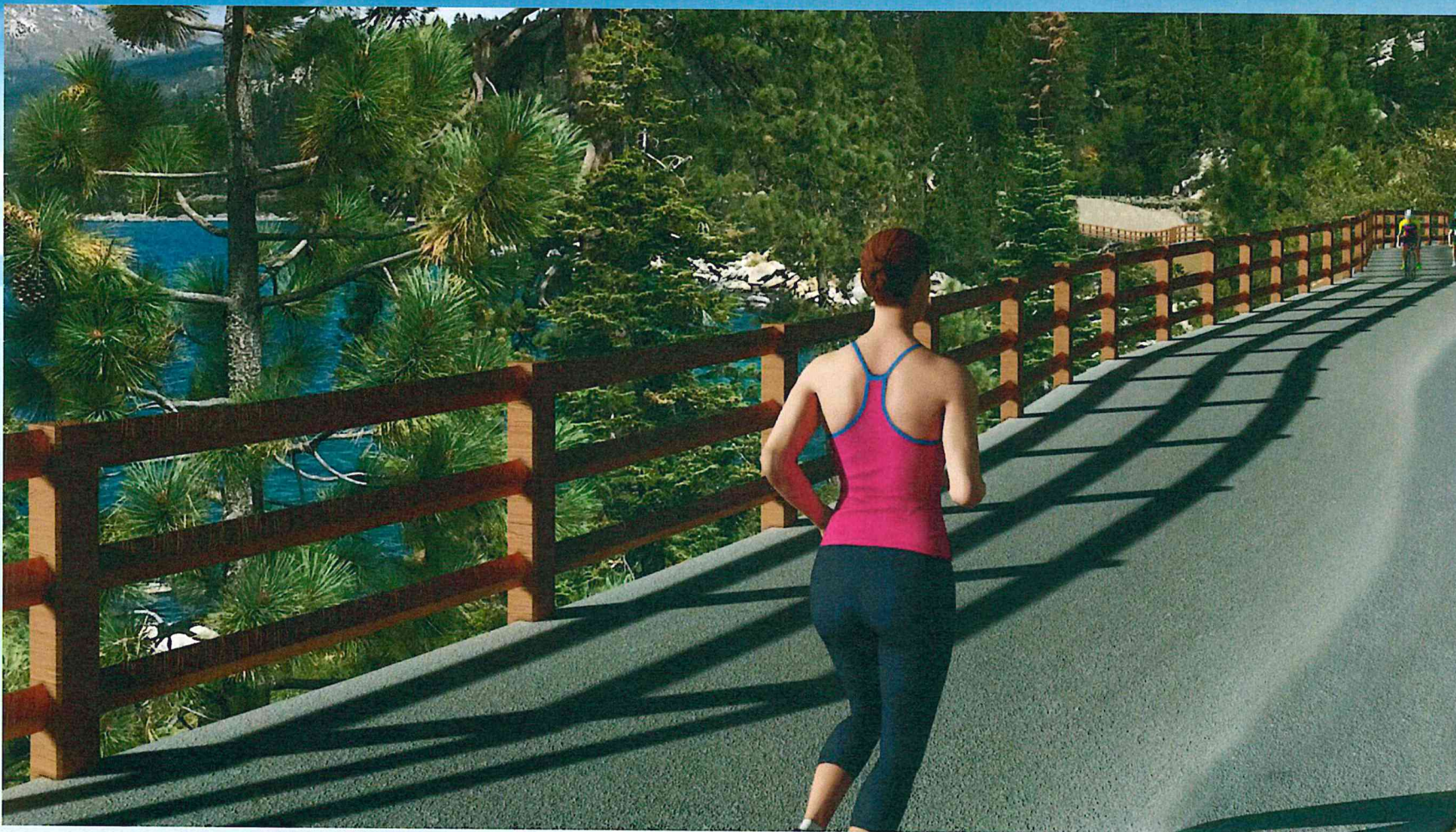
zero[®]
Fatalities
Drive Safe Nevada

Water Quality Improvements

- Erosion Control/Water Quality improvements from Washoe County line to Sand Harbor
- EPIC Drain system in parking area



Shared Used Path



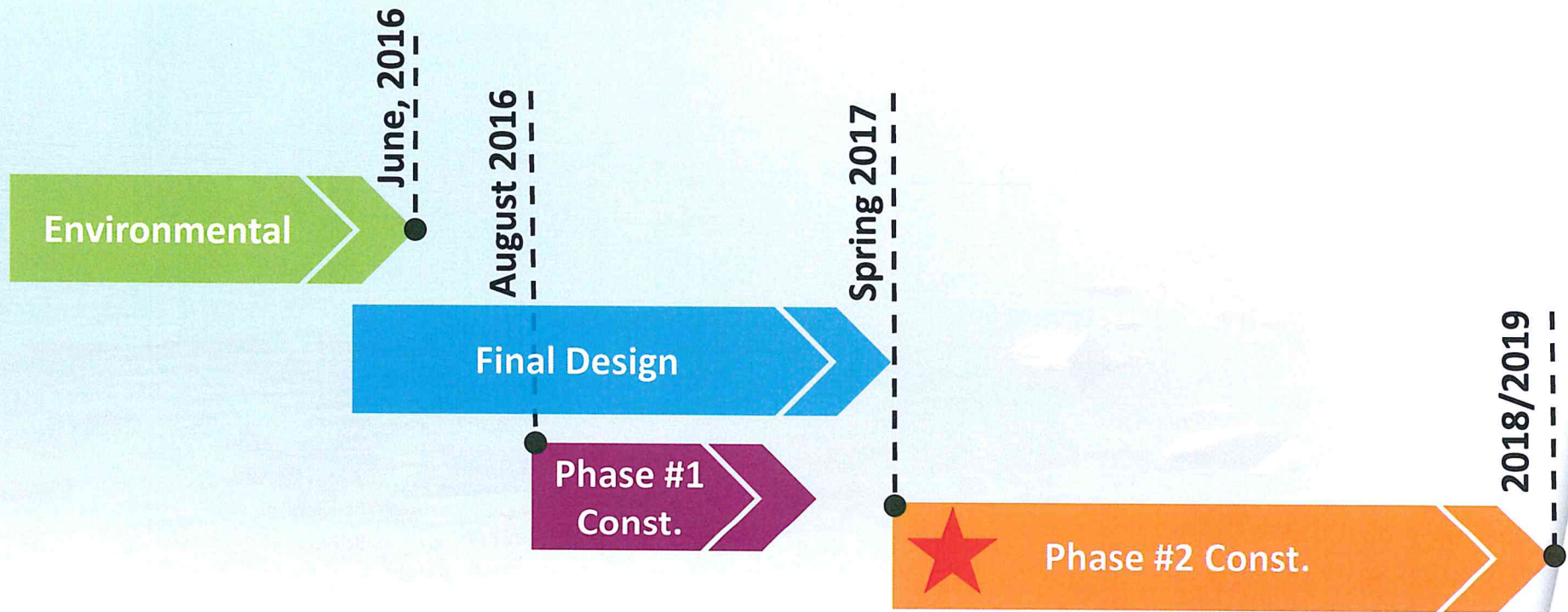
[SR 28 Shared Used Path](#)

Phase 1 Construction – 2016 Construction



Project Timeline

- Designer Approval: CH2M (February 2016)
- Construction Manager @ Risk (CMAR – May 2016)
- Finalized Path Environmental Document; Approved FONSI (June 2016)
- Phase 1; GMP#1 (August 2016); Undercrossing, utilities, & parking
- Phase 2; GMP#2; (April 2017) All remaining work: Path, WQ, ITS, & Safety



Phase 2 Construction

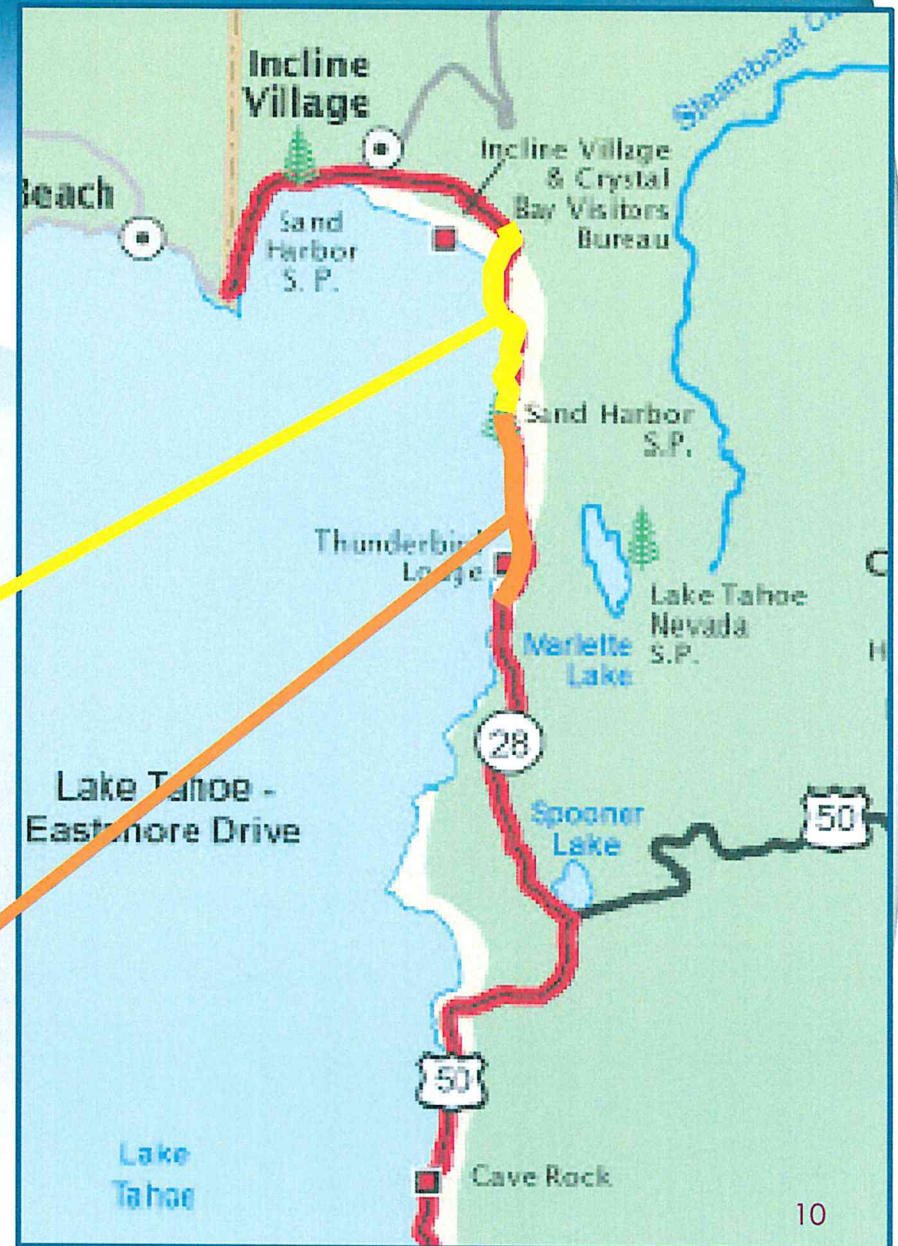
➤ Construction to Begin late April – Early May.

➤ Traffic Impacts

- 1 lane closure between Incline and Sand Harbor (Day and Night)

- Memorial Point Closures

- 1 lane closure south of Sand Harbor (Nightly)



Questions ?

